



EAST  
SURREY  
COLLEGE

ORBITAL SOUTH COLLEGES



# SUCCESS STARTS HERE

2024-25 FULL-TIME  
COURSE GUIDE

VOCATIONAL COURSES  
T LEVELS  
APPRENTICESHIPS  
ACCESS TO HE

APPLY  
FOR  
YOUR  
PLACE  
TODAY





SCAN ME

## OPEN EVENT

Our Open Events are the perfect opportunity to find out all the information you need to take your next steps!

Tuesday 19 September 2023	5pm – 8pm
Thursday 12 October 2023	5pm – 8pm
Saturday 18 November 2023	10am – 1pm
Tuesday 27 February 2024	5pm – 7:30pm
Thursday 27 June 2024	5pm – 7:30pm

Book online at [www.esc.ac.uk/events](http://www.esc.ac.uk/events)

## CONNECT WITH US ON SOCIALS!

See what's going on at the College today by following us on social media!

# WHAT'S INSIDE

### ABOUT THE COLLEGE

- 02 OPEN EVENT DATES
- 04 ORBITAL SOUTH COLLEGES
- 05 WHY CHOOSE ESC?
- 06 STUDENT SUPPORT
- 08 FINANCIAL SUPPORT
- 94 HOW TO FIND US

### STUDENT LIFE

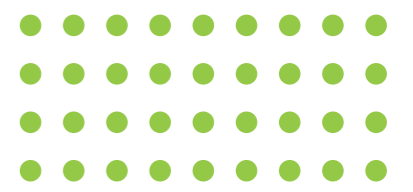
- 12 ENRICHMENT
- 13 STUDENT UNION

### COURSE OPTIONS

- 10 FINDING THE RIGHT COURSE
- 14 APPRENTICESHIPS
- 16 T LEVELS
- 18 HIGHER EDUCATION
- 94 HOW TO APPLY

### COURSES ON OFFER

- 20 ACCESS TO HIGHER EDUCATION
- 24 APPLIED SCIENCE
- 28 AVIATION, TRAVEL & TOURISM
- 32 BUSINESS, ACCOUNTING & IT
- 38 CREATIVE ARTS
- 48 CONSTRUCTION
- 56 EARLY YEARS & CHILDCARE
- 60 ENGINEERING
- 64 HAIR, BEAUTY, MAKE-UP & SPA
- 70 HEALTH & SOCIAL CARE
- 74 MOTOR VEHICLE
- 78 PUBLIC SERVICES & SPORT
- 84 LIFE SKILLS – ESOL
- 88 LIFE SKILLS – SEND



# ORBITAL SOUTH COLLEGES



Orbital South Colleges comprising East Surrey College, John Ruskin College and Reigate School of Art is a leading Further Education group, trusted by schools and employers across Surrey, West Sussex and south London.

Together, our Colleges form a substantial college group in the south east. From June 2022, the Group also includes Orbital South Colleges University Centre as the umbrella organisation for our Higher Education provision.

## OUR MISSION

To provide inspirational, inclusive and high-quality education and training which:

- Empowers individuals
- Creates a talent pipeline for employers
- Enriches our local and wider communities

## OUR VALUES

- Quality
- Innovation
- Aspiration
- Openness
- Responsibility
- Clarity



# WHY CHOOSE ESC?

## Much more than just a college!

Your College life doesn't just mean achieving a new qualification. Studying at ESC will provide you with a whole range of skills and experiences to prepare you for your next steps, whether they are progressing within education or employment. Here are a few examples of why you should join us!

### STATE-OF-THE-ART FACILITIES

Our state-of-the-art campus provides fantastic teaching and enrichment facilities. Our subject areas each have their own dedicated spaces in the College, meaning you will be surrounded by relevant industry equipment and others who share your interests.

You will find all the latest audio-visual resources available for reference, along with thousands of books, magazines and online learning resources in our Learning Resource Centre (LRC).

### HIGH QUALITY TEACHING

All our teaching staff have an in-depth knowledge and expertise in their fields ensuring you get the best from your time at College. Our tutors are here to encourage and support you as you explore and develop, keeping you motivated and inspired through a range of teaching methods.

### STRONG INDUSTRY LINKS

We have connections with a substantial number of local and national employers and universities, to support students in making choices which suit their interests and abilities, sustain their personal and employability development and maximise career progression opportunities into industry.

### GROWING PROVISION

We continually explore new areas that we can offer for Full-time courses and have a growing range of Apprenticeships, Higher Education and Part-time courses available. We also work closely with local schools to ensure we can meet and support the needs of those aged 14-16 on specific courses alongside their school studies.

### EXCELLENT PROGRESSION

In Summer 2022 we achieved 92.1% pass rate on our Level 3 vocational courses. Our 2022/23 destination data showed that 98% of students we contacted had a positive destination after completing their qualification at East Surrey College; with the majority progressing directly to employment related to their course and increasing numbers progressing into higher education.



# STUDENT SUPPORT

We're passionate about supporting you to succeed, and we're here to help make your time here rewarding and enjoyable.

## CLIENT SERVICES

When you apply and enrol at ESC, our dedicated Client Services team will be available throughout the year to help and support you.

They're on hand to offer you impartial information, advice and guidance across a variety of areas, including:

- > Course information, applications and enrolment
- > Progression options and careers advice
- > Financial information, advice and guidance
- > Careers events and Higher Education fairs
- > Higher Education and University support
- > Safeguarding, counselling and mentoring support

## ADDITIONAL LEARNING SUPPORT

Additional support can be provided if you have a diagnosed learning difficulty or disability.

If you have an Education, Health, and Care Plan (EHCP), learning difference, disability or other support need please let us know when you apply. We will ask you for information about your specific needs so we can plan a programme of support with you. Support options may include making reasonable adjustments to facilities and resources

Our Client Services and Student Support teams are on hand to advise and support you during your time at College.

or putting in place specific support which might include access to a learning support assistant or specialist study support sessions.

If additional support is required then a Learning Support Assistant may be allocated to work with you in class or you may be referred for specialist study support sessions.

We also hold a successful autism spectrum support group where students socialise and have opportunities to try out new activities.

## WE CAN PROVIDE:

- > Access to assistive technology and software
- > Assessments for exam access arrangements
- > Dyslexia screening alongside recommended strategies for independent progress in learning
- > Sensory support for hearing and visual needs
- > Neurodiversity support
- > Quiet space

Let us know your needs by ticking the appropriate boxes on your application form and discussing this fully at your interview.



## PERSONAL TUTOR

Once you join you'll be allocated a personal tutor who will keep you updated and support you to achieve your full potential.

Your personal tutor will help you set goals, give guidance and advice on your career options including Apprenticeships, Higher Education or job applications.

## SAFEGUARDING

Keeping you safe is our top priority. All our staff are trained in safeguarding to help ensure our College is a safe place for you to study. There are many routes for students to access support both in-person and online.



Our Client Services team are always happy to help! Please call 01737 788444



We're Matrix accredited which means our staff are trained to nationally recognised standards and all enquiries will be dealt with impartially and confidentially.



wellbeing HUB



We're committed to promoting the importance of taking care of your mental health and wellbeing.

Our Wellbeing Hub is full of useful links and tips for maintaining your mental health and wellbeing while working and studying.

[www.esc.ac.uk/wellbeing-hub](http://www.esc.ac.uk/wellbeing-hub)



careers HUB

Careers Advice and Guidance

The Careers team offer support to help you with career planning and preparing for your key steps towards employment and work readiness:

- > Exploring career pathways
- > Improving your job search
- > Identifying your transferable skills
- > CVs & job applications
- > Support with UCAS applications

[www.esc.ac.uk/about-careers-hub](http://www.esc.ac.uk/about-careers-hub)



# FINANCIAL SUPPORT

**A HELPING HAND IF YOU NEED IT!  
HAPPY TO HELP ANYTIME.**

**There are a number of financial support options available to you depending on your age, level of study and circumstances.**

## UNDER 19?

If you are under the age of 19 on 31 August 2024 and you meet the eligibility criteria, your course is FREE.

You may be required to pay a resource fee and educational visit costs, however financial support is available for those who need it (subject to family income level).

## 19 AND OVER?

Depending on the qualifications you have already gained, tuition and/or exam fees may be payable. If you are aged 19-23 on 31 August 2024 and are studying your first full Level 2 or Level 3 qualification, then you may not have to pay tuition or exam fees.

If you're 19+, you have not achieved a full Level 3 qualification and the course you are applying for is on the Skills For Jobs list, then you may also not have to pay tuition or exam fees.



For Level 2 qualification courses and below, you may not have to pay tuition or exam fees if you are unemployed and receiving a state benefit, or you are working and are on a low income (exact criteria to be confirmed by the Education and Skills Funding Agency (ESFA) in May 2024).

If you are aged 19+ studying a Level 3 qualification and are not entitled to any other waivers, you will normally have to pay course fees. Or if available, you can apply for an Advanced Learner Loan (applicable to adults studying at Level 3 or higher). The loans are managed by the Student Loans Company, and further information can be found on their website [www.slc.co.uk](http://www.slc.co.uk).

If you are using the Advanced Learner Loan to pay for an Access to Higher Education course, once you have successfully completed your Higher Education course, the Student Loans Company will write off the amount outstanding on the loan.



## FINANCIAL SUPPORT

Students from low income households, including those on benefits, may be eligible for financial support through one of our bursary support schemes. Students who are classified as a vulnerable learner may also be eligible.

Following a needs assessment, students may be eligible for financial support towards; childcare costs, resource/materials fees, kit and uniform, essential educational visits, free school meals, travel expenses and more.

Application forms are available at [www.esc.ac.uk](http://www.esc.ac.uk) or from our Bursary Officer, who can provide detailed information relevant to you and will assess your application to see if you are eligible for financial support.

One-to-one support is available with our Bursary Officer who can give confidential information and advice about student loans, funding, bursaries and more.

Financial support may be available (subject to household income) to help cover the cost of course-related costs such as course equipment, books, lunch at College, uniforms, visits and travel expenses.

## NEED MORE INFO?

You may be eligible for funding even if your personal circumstances are not mentioned above. Call our Bursary Officer on **01737 788444** or email [studentbursary@osc.ac.uk](mailto:studentbursary@osc.ac.uk).

# ENGLISH & MATHS

## HOW WE SUPPORT YOU

GCSE Maths and English are essential qualifications and form part of our Full-time programmes at East Surrey College. Whatever your future holds it is vital that you know how to communicate effectively and how to work with numbers. These skills are an integral part of everyday life, and when applying for a job or College course you will often be asked to provide evidence that you have mastered them. Therefore they are vital to your future success in progressing to other courses and in gaining employment.

We offer a variety of ways to support your learning both in and outside the classroom, through mentoring classes, revision breakfast clubs and fun competitions.



[www.esc.ac.uk/  
full-time/maths-and-english](http://www.esc.ac.uk/full-time/maths-and-english)

# FINDING THE RIGHT COURSE

## UNLOCK YOUR POTENTIAL ON A COURSE YOU LOVE!

We offer courses across a range of subject areas at various levels to suit your strengths, taking you to the next level. This section is designed to help you find the right course.

### FUNCTIONAL SKILLS

Functional skills are the fundamental skills you need for work and your personal life. They can be studied as standalone qualifications or as a stepping stone to GCSEs and support progression to higher levels. You are eligible to study functional skills if you are:

- 16+, have left compulsory Full-time education or do not have an up-to-date English or Maths qualification at Level 2 (such as a GCSE)
- Between the ages of 16-18 and are studying a Full-time course

### ENGLISH FOR SPEAKERS OF OTHER LANGUAGES (ESOL)

If English isn't your first language, ESOL courses cover speaking, listening, reading and writing. You will be assessed before starting, to ensure you are placed on the right course level.

### GCSES

Good grades at GCSE level can make the difference when it comes to employment and opportunities for progression. They are the main qualifications taken by 14-16 year olds, and are highly valued by schools, colleges and employers.

Maths and English are particularly valued by employers and are important to be able to progress onto higher levels.

### APPRENTICESHIPS AND NVQS

An NVQ is an industry related qualification that you can study at College or at work as part of an Apprenticeship. You will learn practical, work-related tasks to help you develop the skills and knowledge to do a job effectively. You will be assessed to see the areas that need to be developed to complete your qualification. See page 15.

### BTECS

BTECs are designed for those interested in a particular sector or industry, offering a mix of theory and practice learning, including an element of work experience or a work-related project and are equivalent to 3 A Levels.

You could study a BTEC at Level 2 or 3, either as a standalone course, alongside an academic qualification or as part of a wider programme (such as an Apprenticeship).

### T LEVELS

T Levels are the new career-focused qualification which gets students career ready with a focus on work placements and classroom/workshop learning. They are equivalent to 3 A Levels and will help you step straight into your chosen career, Apprenticeship or Degree. See page 16.

### YOUR STUDY PROGRAMME

As well as your chosen qualification, you'll have the opportunity to:

- Gain your English and Maths qualifications (if not already achieved at GCSE grade 9-4/A\*-C)
- Benefit from group and one-to-one tutorial support
- Gain work experience and develop important employability skills
- Enjoy a variety of enrichment activities
- Get support with your CV, applying for a job or university and preparing for interviews



**Our Client Services team are always happy to help! Please call 01737 788444**

Qualifications featured in this guide may be subject to change due to changes by awarding bodies or funding changes from the ESFA (Education & Skills Funding Agency).

### YOUR CURRENT QUALIFICATIONS/ GRADES

BTEC National/ Extended Diploma  
NVQ Level 3/4  
Access to HE Course  
T Level  
A Level

BTEC National/ Extended Diploma  
NVQ Level 3  
T Level  
Access to HE Course  
A Level

4 or 5 GCSEs Grade 9-4 (A\*-C)  
NVQ Level 2  
BTEC Level 2  
Extended Certificate  
Intermediate Apprenticeship

4 GCSEs Grade 9-3 (A\*-D)  
Functional Skills  
Foundation Level (Merit)  
NVQ Level 1  
BTEC Level 1 Diploma (Merit)

GCSEs Grade 2 (E)/  
Functional Skills  
Employability/  
Work Skills Programme  
Progression Award  
Basic Skills Entry Level 3

No or few formal qualifications, or if you are looking to improve your basic skills

### JOIN AT LEVEL

5

4

3

2

1

ENTRY LEVEL

### TYPES OF COURSES YOU CAN PROGRESS ONTO

Foundation Degree  
Degree  
Diploma of Higher Education  
Degree Apprenticeship  
Professional Qualification

Certificate of Higher Education  
Higher National Diploma/Certificate  
Higher Apprenticeship  
Professional Qualification  
Level 4 Diploma

A Level  
T Level  
Access to HE Course  
BTEC Extended Diploma  
BTEC Level 3 Award/  
Certificate/Diploma  
Advanced Apprenticeship

BTEC Level 2 Diploma  
BTEC Level 2  
Extended Certificate  
Intermediate Apprenticeship  
GCSE English and Maths

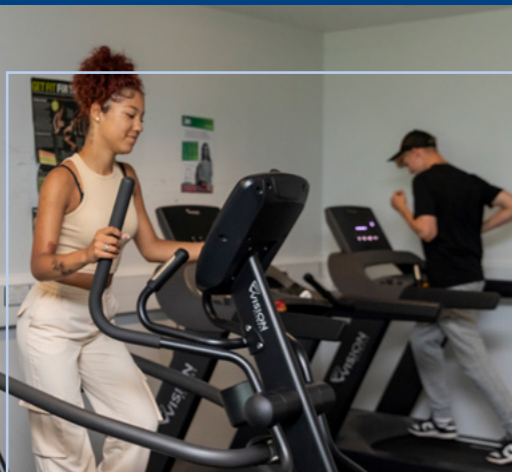
Foundation Level Course  
BTEC Level 1 Award/  
Certificate/Diploma  
Level 1 Diploma  
Functional Skills  
English, Maths and IT

Functional Skills  
English & Maths  
Progression Award  
Skills for Working Life Programme  
Vocational Studies  
Life Skills Programme



## MAKE THE MOST OF YOUR COLLEGE EXPERIENCE

Taking part in an enrichment activity is a great way of meeting new people, learning some new skills and having fun!



### ACTIVITY PROGRAMME

You'll find a wide variety of morning, lunchtime and early evening activities you can participate in outside of your academic timetable.

This might involve taking part in sporting activities such as badminton, football, self defence or gaming; joining the Student Union committee to design the enrichment programme for the academic year; working on community or charity work; or volunteering your time to support the local community.

We work hard to provide a wide range of interesting activities for you to take part in, but we are always open to new suggestions and ideas of activities you would like to do. All activities are free and open to all students.

### FRESHERS' FAIR

During your first term at College, you'll be invited to our Freshers' Fair event. Here you will find various exhibitors giving out information, advice and guidance about volunteering and employment opportunities. You'll also have the chance to sign up to various clubs and societies, pick up lots of freebies and get involved in fun activities.

- There's a wide variety of free activities outside of your academic timetable
- Meet new friends, learn a new skill and have fun!
- Join in, boost your confidence and develop your personal skills



### NEED MORE INFO?

To find out more about enrichment visit [www.esc.ac.uk/enrichment](http://www.esc.ac.uk/enrichment)



## GET INVOLVED AND HAVE YOUR SAY!

Run by students for students, the East Surrey College Student Union is here to represent the student voice in the College.

The SU serves as a channel of communication between the student body and the College Senior Leadership Team. This helps evolve the College experience for all, ensuring students' views and opinions are included every step of the way.

The SU also supports the local community through the voluntary work they do and causes they support. We work hard to provide a wide range of interesting activities for you to take part in, but we are always open to new suggestions and ideas of activities you would like to do.



### CONNECT WITH US ON SOCIAL MEDIA

Follow our social media accounts and you'll be able to keep up-to-date with what we've been up to.

Be sure to FOLLOW, LIKE, COMMENT and SHARE our posts!



### OUR AIMS AND RESPONSIBILITIES

- To ensure the student body has a running voice throughout the College
- Fundraising for charity and for extra facilities for students
- To strengthen the community spirit within the College

### NEED MORE INFO?

To find out more about the Student Union visit [www.esc.ac.uk/student-union](http://www.esc.ac.uk/student-union)





### WHO CAN BECOME AN APPRENTICE?

You can start an Apprenticeship if:

- You're aged 16+
- You live in England
- You're not in full-time education

### YOUR NEXT STEPS

After completing an Apprenticeship, you could continue to train for an Advanced, Higher or Degree Level Apprenticeship, or a related vocational qualification. Alternatively, you could head to university or take a professional qualification that leads to a specialist job role in your chosen industry.

### WANT TO FIND OUT MORE? GET IN TOUCH

To receive further guidance contact our friendly **Employer Services** team. We are often developing new programmes to keep up-to-date with industry changes.

*\*As voted by Apprentices in the RateMyApprenticeships Top 50 Training Providers for 2022-2023*

### CALL US

**01737 788316** or email us at **employerservices@esc.ac.uk**



### BROWSE OUR EXTENSIVE RANGE OF APPRENTICESHIPS:

#### AVIATION

- Aviation Ground Operative Level 2
- Aviation Ground Specialist Level 3

#### BUSINESS, FINANCE & ACCOUNTING

- Chartered Manager Level 6
- Customer Service Practitioner Level 2
- Customer Service Specialist Level 3
- Operations/Departmental Manager Level 5
- Professional Accounting/Taxation Technician Level 4
- Team Leader/Supervisor Level 3

#### COMPUTING, DIGITAL & IT

- Digital Marketer BSc (Hons) Degree Level 6
- Information Communication Technician Level 3
- Software Developer Level 4
- Software Development Technician Level 3

#### CARING SERVICES

- Adult Care Worker Level 2
- Early Years Educator Level 3
- Early Years Practitioner Level 2
- Lead Adult Care Worker Level 3

#### CONSTRUCTION

- Advanced Carpentry & Joinery (Site Carpentry) Level 3
- Bricklayer Level 2
- Building Services Design Technician Level 3
- Building Services Engineering Installer Level 2
- Building Services Engineering Technician Level 4
- Carpentry & Joinery (Bench Joinery) Level 2
- Carpentry & Joinery (Site Carpentry) Level 2
- Chartered Surveyor Level 6
- Civil Engineering Technician Level 3

- Construction Design & Build Level 4
- Construction Ground Worker Level 2
- Construction Quantity Surveying Level 4
- Construction Site Engineering Technician Level 4
- Construction Site Manager Level 6
- Construction Site Supervisor Level 4
- Construction Support Technician Level 3
- Groundworker Level 2
- Installation Electrician/Maintenance Electrician Level 3
- Painter & Decorator Level 2
- Plumbing & Domestic Heating Technician Level 3
- Property Maintenance Operative Level 2
- Surveying Technician Level 3

#### ENGINEERING

- Engineering Fitter Level 3
- Electrical Power Network Engineer Level 4
- Embedded Electronic Systems Level 6
- Engineering Manufacturing Technician Level 4
- Engineering Operative Level 2
- Engineering Technician Level 3
- General Welder (Arc Processes) Level 2

#### MAINTENANCE & OPERATIONS

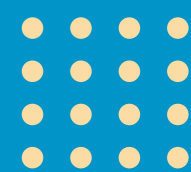
- Engineering Technician Level 3
- Science Industry Maintenance Technician Level 3

#### HAIRDRESSING & BARBERING

- Hair Professional (Barbering) Level 2
- Hair Professional (Hair) Level 2

#### TEACHING

- Teaching Assistant Level 3
- Learning & Skills Teacher Level 5



# Apprenticeships

Earn while you learn, build your skills and gain a nationally recognised qualification.

### WHAT IS AN APPRENTICESHIP?

Apprenticeships are designed for students of all ages (16+) who have left full-time education and are in employment. You will be employed by a company and earn a wage whilst you learn, build your skills and gain a nationally recognised qualification.

To start an Apprenticeship programme you will need to secure employment. Training is flexible, with the majority being completed 'on the job' and the rest provided by our team at College.



# T-LEVELS

## THE NEXT LEVEL QUALIFICATION

A career-focused alternative to A Levels.

### WHAT ARE T LEVELS?

T Levels are new Level 3 courses following on from GCSEs and are equivalent to a Level 3 vocational study programme or studying 3 A Levels. These two year courses have been developed in collaboration with employers and businesses so that the content taught meets the needs of industry and prepares you for work, further training or study.

T Levels offer you a mixture of college-based learning and 'on-the-job' experience during an industry placement of at least 315 hours (approximately 45 days).

### ARE T LEVELS RIGHT FOR YOU?

This next level qualification is right for you if you:

- Have just finished your GCSEs
- Want to get into a skilled job
- Like a mixture of classroom and practical learning
- Want the knowledge, skills and experience to get the job you want
- Are interested in spending time with employers to try out different job roles

### FIND OUT MORE

See course pages for more information or view online [www.esc.ac.uk/tlevels](http://www.esc.ac.uk/tlevels)

### HOW DO THEY WORK?

You'll spend 80% of your time in College and 20% on an industry placement, where you'll gain the knowledge and skills employers are looking for and develop a better understanding of the workplace.

T Levels consist of the following compulsory elements:

1. An approved technical qualification – core theory specialist skills and knowledge specific to your chosen occupation/career path.
2. An industry placement with an employer of at least 45 days – providing the knowledge and experience to progress to skilled employment, further study or a Higher Apprenticeship.
3. You will need 5 GCSEs grade 9-4 (A\*-C) including English and Maths; or a Level 2 diploma/extended certificate to apply at East Surrey College.

### CAN I GET UCAS TARIFF POINTS?

Yes. Your T Level will be worth UCAS points so you can use the qualification when applying for Higher Education.

### WHAT IS THE DIFFERENCE BETWEEN A T LEVEL AND AN APPRENTICESHIP?

T Levels are based on the same standards as Apprenticeships which are designed by employers.

However, T Levels differ from Apprenticeships as T Levels prepare students for work, further training or further study. T Level students will spend most of their time in College.

- A blend of classroom learning with an industry placement
- Nationally-recognised qualification, with the top T Level grade (Distinction\*) equivalent to 3 A Levels at A\*
- Gain vocational skills for progression to skilled employment, higher study or an Apprenticeship



## SUBJECTS AVAILABLE FOR 2024

### BUSINESS & ADMINISTRATION

Accounting

\*Management & Administration

### CONSTRUCTION

Design, Surveying & Planning for Construction (Surveying & Design for Construction & the Built Environment)

### DIGITAL

Digital Production, Design & Development

### EDUCATION & CHILDCARE

Education & Childcare

### ENGINEERING & MANUFACTURING

Design & Development for Engineering & Manufacturing (Electrical & Electronic Engineering)

### HAIR & BEAUTY

\*Hairdressing, Barbering & Beauty Therapy

### HEALTH & SCIENCE

Health

\*Only available at John Ruskin College, Croydon





# HIGHER EDUCATION

**ORBITAL SOUTH COLLEGES UNIVERSITY CENTRE IN REDHILL OFFERS A DIVERSE RANGE OF HIGHER EDUCATION COURSES DESIGNED TO PROVIDE SKILLS AND KNOWLEDGE REQUIRED TO TAKE YOUR CAREER TO THE NEXT LEVEL.**

We are proud to announce that the Department for Education (DfE) has approved the title of Orbital South Colleges University Centre for our growing Higher Education provision.

- Excellent facilities
- Great transport links from London, Croydon and across the South East
- Industry experienced tutors
- Lower fees than universities
- Small class sizes
- Flexible entry requirements



### OUR QUALIFICATIONS INCLUDE:

- Degree Programmes (BA (Hons) Top-Up/BSc (Hons))
- Foundation Degrees (FdA/FdSc)
- Higher National Diplomas (HNDs)
- Higher National Certificates (HNCs)
- Higher and Degree Apprenticeships
- Professional Courses

### WHO WE WORK WITH

Our Foundation and Degree programmes are awarded by the University of Chichester, recently ranked 21st by the Guardian University League Table 2022. We also work with selected institutions to provide high quality teaching and qualifications.



**Our Foundation Degree and Honours programmes are awarded by the University of Chichester.**



### ART, DESIGN & MEDIA

Make-Up, Special Effects & Hair for Media & Performance FdA / BA (Hons) Top-Up

### BUSINESS, ACCOUNTING & IT

Internet Software Development FdSc  
Management FdA

### CONSTRUCTION

Construction & The Built Environment:  
Building Services Engineering HNC / 1 Year Fast-Track HNC / HND Top-Up  
Civil Engineering HNC / 1 Year Fast-Track HNC / HND Top-Up  
Construction HNC / 1 Year Fast-Track HNC  
Construction Management – HND Top-Up  
Surveying HNC / 1 Year Fast-Track HNC / HND Top-Up  
Quantity Surveying BSc (Hons)

### TEACHING & EARLY YEARS

Early Years FdA\*  
Education & Training BA (Hons)

### ENGINEERING

Electrical/Electronic Engineering HNC / HND Top-Up  
Electrical Power Networks & Distribution Engineering HNC  
Embedded Electronic Engineering HND Top-Up Engineering (General) HNC  
Engineering (General) HNC / HND Top-Up  
Mechanical Engineering HNC / HND Top-Up

### SPORT & PUBLIC SERVICES

Public Services HNC  
Sport and Exercise Science HNC

**HOW TO APPLY**  
For more information and to apply visit our website: [www.esc.ac.uk/higher-education](http://www.esc.ac.uk/higher-education) or call our Client Services team on: 01737 788444



# ACCESS TO HIGHER EDUCATION

Apply for an Access to Higher Education course, and within one year, you can gain a qualification required to enter university.

If you have taken a break from education and are eager to return, or if you still need to gain the required qualifications, this course is the perfect fit for you.

Designed to prepare individuals for studying at a higher level, Access courses offer a comprehensive pathway to universities and can be your steppingstone towards achieving your academic goals.

At East Surrey College, we offer a range of Access diplomas in subjects within Health-related professions, Science and Social Work.

As a student aged 19+, you may not have to pay upfront tuition fees and may be eligible to apply for the Advanced Learner Loan. The Advanced Learner Loan, managed by the Student Loans Company, is set up for students aged 19+ who want to study at Level 3 or higher. More information on eligibility for financial support and student loans can be found on page 8.



"THE ACCESS COURSE HAS GIVEN ME THE RIGHT QUALIFICATIONS THAT I NEED TO APPLY FOR UNIVERSITY OR MOVE ON TOWARDS MY NEXT STEPS."

GEMMA  
ACCESS TO NURSING & HEALTH  
RELATED PROFESSIONS  
LEVEL 3



**FUTURE CAREER PATHS INCLUDE**

- BIOMEDICAL SCIENTIST
- CARE ASSISTANT
- MICROBIOLOGIST
- MIDWIFE
- NURSE
- PARAMEDIC
- PHYSIOTHERAPIST
- SOCIAL WORKER

ACCESS TO HIGHER EDUCATION COURSES ARE WIDELY RECOGNISED BY UK UNIVERSITIES

---

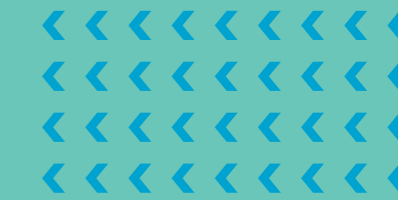
BUILD THE SKILLS AND CONFIDENCE FOR THE DEMANDS OF UNDERGRADUATE STUDIES

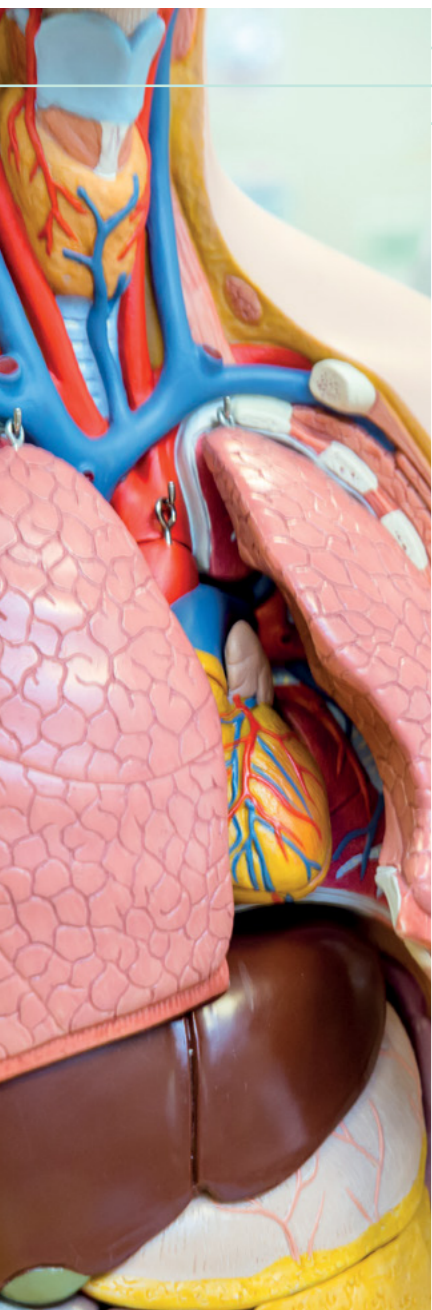
---

A GREAT WAY TO PREPARE ADULTS 19+ WHO WOULD LIKE TO STUDY HIGHER EDUCATION BUT DO NOT HAVE THE NECESSARY QUALIFICATIONS

**THINKING ABOUT AN APPRENTICESHIP?**

Check out the range of subjects we offer from Level 2 to Higher and Degree Level – page 14-15!





## PRE ACCESS TO HEALTH CARE PROVISION

LEVEL 2 | 1 YEAR

### ENTRY REQUIREMENTS

Age 19+ only, no formal qualifications required. GCSEs grade 3 or above (D or above) in English and Maths, plus work experience in the health and social care industry.

**Assessment:** Continual assessment through a range of assignments, exams and presentations.

On this course, you will gain experience in the health care industry and develop a foundation for further study.

### STUDIES INCLUDE

- Biology
- Communications
- Health & Safety
- Safeguarding

### PROGRESSION

- Access to Nursing

## ACCESS TO MEDICAL SCIENCE

LEVEL 3 | 1 YEAR

144 UCAS Points (Grade D45)

### ENTRY REQUIREMENTS

Age 19+ only, no formal qualifications required. GCSEs grade 9-4 (A\*-C) in English and Maths, and either a full level 2 qualification or substantial work experience in a related area.

**Assessment:** Continual assessment through a range of assignments, exams and presentations.

The Diploma is taught by subject specialist teachers who will give you an intensive one-year introduction to biology and chemistry.

### STUDIES INCLUDE

- Cell biology
- Energy
- Cardiopulmonary system
- Fundamentals of chemistry
- Structure and bonding

### PROGRESSION

- BA (Hons) in Medical Science
- BA (Hons) in Forensic Science
- BA (Hons) in Bioscience

### CAREER PATHS

- Clinical research associate
- Clinical scientist, biochemistry
- Clinical scientist, genomics
- Clinical scientist, immunology
- Medical science liaison
- Physician associate
- Research scientist (medical)

## ACCESS TO NURSING & HEALTH RELATED PROFESSIONS

LEVEL 3 | 1 YEAR

144 UCAS Points (Grade D45)

### ENTRY REQUIREMENTS

Age 19+ only, no formal qualifications required. GCSEs grade 9-4 (A\*-C) in English, and either a full level 2 qualification or substantial work experience in a related area.

**Assessment:** Continual assessment through a range of assignments, exams and presentations.

On this course you'll develop sound knowledge of the healthcare sector preparing you for the first year of any health-related degree course.

### STUDIES INCLUDE

- Digestion of the liver
- Musculoskeletal system
- Psychology and mental health
- The effects of stress
- Human biology
- Understanding human health and disease

### PROGRESSION

- BA (Hons) Nursing

### CAREER PATHS

- Adult nurse
- Children's nurse
- Health play specialist
- Health visitor
- High intensity therapist
- Learning disability nurse
- Mental health nurse
- Midwife
- Paramedic
- Physician associate

## ACCESS TO SOCIAL WORK

LEVEL 3 | 1 YEAR

144 UCAS Points (Grade D45)

### ENTRY REQUIREMENTS

Age 19+ only, no formal qualifications required. GCSEs grade 9-4 (A\*-C) in English and Maths.

**Assessment:** Continual assessment through a range of assignments, exams and presentations.

On this course you will develop your knowledge of the theory, principles and practices of sociology, psychology, counselling and social work practice.

You will explore a range of subjects which will give a broad understanding and knowledge, and will be helpful in enhancing a wider range of career options.

### STUDIES INCLUDE

- Psychology & Sociology
- Social work practice
- Education
- Approaches to counselling
- Cultural studies
- Criminology

### PROGRESSION

- BA (Hons) Social Work
- BA (Hons) Applied Humanities
- BA (Hons) Psychology
- BA (Hons) Sociology
- BA (Hons) Social Science



## MEET RUTA

Access to Nursing – Level 3

What do you enjoy most about your course?

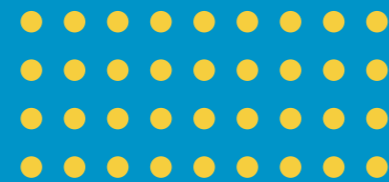
I've really enjoyed learning about the physiology of the human body, which gives the groundwork for a deeper understanding of its functions. Predicting and overcoming obstacles prepares you for university, giving you valuable insight into what is to come.

What are your future plans?

I have a place at London South Bank University. When I finish Uni, I want to gain broader experience in various settings, including London hospitals, before becoming a nurse practitioner.

"IF UNI IS WHERE YOU WANT TO GO, JOIN THIS COURSE. IT GIVES A REAL INSIGHT INTO WHAT TO EXPECT AND SMOOTHS THE TRANSITION"

# APPLIED SCIENCE



Are you interested in an exciting career in a scientific role? Do you want to be at the forefront of the latest scientific research underpinning modern life? Then a course in the exciting world of science is for you!

By studying an Applied Science course with us, you will broaden your scientific knowledge and skills in biology, chemistry and physics; whilst developing specialist skills that can be linked to specific areas within the industry. You'll get hands-on experience in our purpose-built science laboratory equipped with all the industry-standard equipment you'll need.

Applied science opens up a wide range of career opportunities in various industries where scientific principles are put into practice. Here's a list of potential jobs and career paths you could consider after completing your studies in applied science.

## CAREER PATHS:

- Laboratory Technician
- Quality Control Analyst
- Research Assistant
- Environmental Technician
- Food Scientist/Technologist
- Pharmaceutical Sales Representative
- Clinical Research Coordinator
- Technical Writer
- Biotechnologist
- Chemical Analyst
- Materials Scientist
- Data Analyst
- Forensic Scientist
- Medical Laboratory Technician
- Renewable Energy Technician

**“I HAD HEARD LOTS OF GOOD THINGS FROM FRIENDS WHO WERE ALREADY AT ESC. ALSO, I FELT CONFIDENT ABOUT COMING HERE KNOWING THE COLLEGE WAS ‘DISABILITY CONFIDENT’ AND OFFERED GOOD LEARNING SUPPORT.”**

**JAMES**  
APPLIED SCIENCE  
LEVEL 3

## THINKING ABOUT AN APPRENTICESHIP?

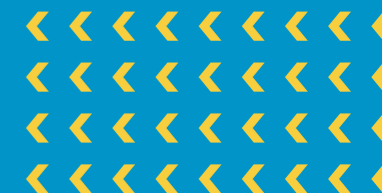
Check out the range of subjects we offer from Level 2 to Higher and Degree Level – page 14-15!



DEVELOP TECHNICAL SKILLS AND KNOWLEDGE IN OUR STATE-OF-THE-ART LABORATORY

OPPORTUNITIES TO WORK COLLABORATIVELY AND TAKE PART IN WORK-BASED PROJECTS

HEAR FROM EXTERNAL INDUSTRY SPEAKERS, SUCH AS FORENSIC SCIENTISTS AND CLINICAL NURSES/DOCTORS.





**APPLIED SCIENCE**  
LEVEL 2 EXTENDED CERTIFICATE  
1 YEAR

**ENTRY REQUIREMENTS**

5 GCSEs grade 9-3 (A\*-D) including English, Maths and Science.

**Assessment:** Coursework, practical assessments and external examinations.

This course will develop your understanding of chemistry, biology and physics and how they relate to real-life applications in a science workplace. You will have the opportunity to perform a variety of experimental work, learn how to work safely within a laboratory environment and how to use Maths and statistics to analyse experimental data. This is a practical, work-related course, where you'll develop a responsible and cooperative approach, often working in small groups and presenting your find

**STUDIES INCLUDE**

- Scientific skills
- The living body
- Principles of Science
- Chemistry and our Earth
- English and Maths (if not already achieved at GCSE grade 9-4/A\*-C)

**PROGRESSION**

Upon successful completion, you'll have the chance to progress directly onto our Applied Science Level 3 Extended Diploma. With further study and training you may also pursue a career in laboratory based work such as a lab technician, forensic scientist, environmental scientist or in other science settings.

**APPLIED SCIENCE**  
LEVEL 3 EXTENDED DIPLOMA  
2 YEARS

168 UCAS Points (Grade D\*D\*D\*)

**ENTRY REQUIREMENTS**

5 GCSEs grade 9-4 (A\*-C) including English, Maths and Science or: BTEC Level 2 Technical in Laboratory Science/BTEC NQF Level 2 Extended Certificate/BTEC QCF Level 2 Diploma Merit/Distinction and GCSEs grades 9-4 (A\*-C) in English, Maths and Science.

**Assessment:** Coursework, practical and external examinations.

This is a theoretical, practical and work-related course, developing the necessary skills, knowledge and understanding for both biomedical and forensic sciences.

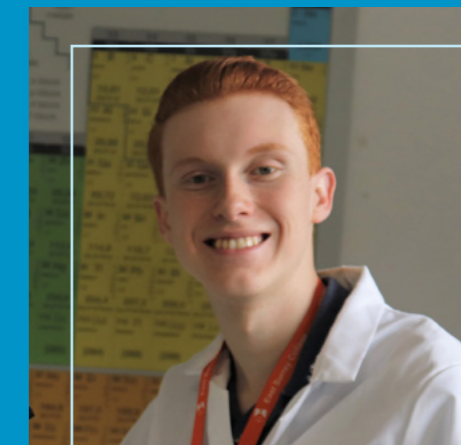
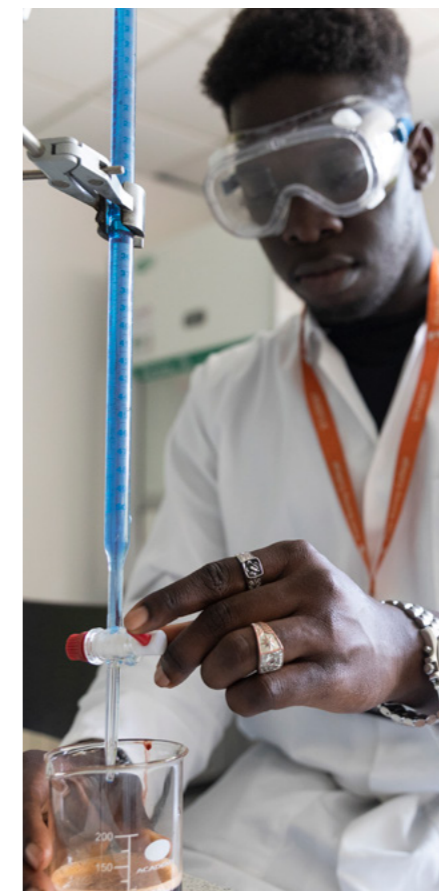
This course will include relevant talks from industry professionals and visits to places of scientific interest to support your progression into a forensic or biomedical field.

**STUDIES INCLUDE**

- Science investigation skills
- Principles and applications of science
- Contemporary issues in science
- Biomedical science
- Forensic evidence, collection and analysis

**PROGRESSION**

Progression to degrees in medical science or forensic science is possible after completion of your course. Alternatively you may also progress directly into employment in the science and health-related industry.



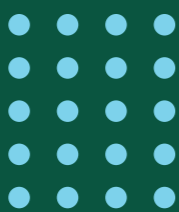
**MEET JAMES**  
Applied Science – Level 3

**What led you to choose this course?**  
I've been interested in Science since Year 9, I chose this course as it offered an alternative route into science that wasn't 100% exam based, and there was an even split between theory and coursework.

**What do you enjoy most about your course?**  
The hands-on aspect is brilliant! Also, creating lab reports on the equipment and health & safety measures used during procedures provides a beneficial grounding for entering the industry.

"THE FACILITIES ARE BRILLIANT, AND THERE IS AN AMAZING SOCIAL SIDE. IT'S FRIENDLY AND WELCOMING, AND YOU CAN GET YOUR OWN COMMUNITY. IF YOU'RE ANXIOUS OR NEED CLARIFICATION, THERE IS PLENTY OF COUNSELLING, SAFEGUARDING AND STUDENT SUPPORT."

# AVIATION, TRAVEL & TOURISM



Do you have a passion for travel, great people skills and a flair for adventure? Start your journey with an Aviation or Travel & Tourism course.

Studying travel and tourism or aviation can lead to exciting and diverse career opportunities within the travel, hospitality, and aviation industries. Our experienced staff will help you to develop a range of desirable, transferable skills allowing you to progress into your chosen industry. East Surrey College maintains excellent links with local employers, providing you with opportunities to hear from industry leaders and gain valuable insights into this sector.

**“I’M CURRENTLY WORKING AS CABIN CREW AT BRITISH AIRWAYS EUROFLYER FLEET. MY FAVOURITE THING IS THAT EVERY DAY IS DIFFERENT WITH A NEW CREW, MEETING NEW PEOPLE. I ALSO LOVE THE UNIFORM.”**

PAST STUDENT MIA  
RECENTLY UPDATED US FOLLOWING HER CABIN CREW  
LEVEL 3

Potential jobs and career paths you could consider after completing your studies in these fields.

## CAREER PATHS:

- Aviation
- Airline Pilot
- Flight Attendant
- Aircraft Maintenance Technician
- Air Traffic Controller
- Aerospace Engineer
- Aviation Management
- Aviation Safety Inspector
- Aviation Dispatcher
- Aviation Consultant
- Airline Customer Service Representative
- Cabin Crew
- Flight Attendant
- In-Flight Manager
- Cabin Crew Trainer
- Cabin Crew Recruitment Specialist
- In-Flight Sales
- Cabin Crew Coordinator
- Airline Customer Service
- Aviation Safety Inspector
- Corporate Flight Attendant
- Airport Ground Operations
- Travel & Tourism
- Travel Agent
- Tour Operator
- Hotel Manager
- Event Planner
- Cruise Director
- Destination Marketing Manager
- Travel Writer/Blogger
- Cultural Heritage Manager
- Hospitality Manager
- Travel Consultant



GAIN INDUSTRY KNOWLEDGE FROM OUR SPECIALIST TUTORS

WE HAVE FANTASTIC LINKS WITH LOCAL EMPLOYERS SUCH AS JET2, GATWICK AIRPORT AND EASYJET

TRIPS, VISITS AND WORKSHOPS WILL GIVE YOU FIRST-HAND INSIGHT AND EXPERIENCE OF THE SECTOR



## THINKING ABOUT AN APPRENTICESHIP?

Check out the range of subjects we offer from Level 2 to Higher and Degree Level – page 14-15!



## CABIN CREW, TRAVEL & TOURISM

LEVEL 2 DIPLOMA | 1 YEAR

### ENTRY REQUIREMENTS

5 GCSEs grade 9-3 (A\*-D) including English and Maths.

**Assessment:** Some written assignment tasks, short tests, observations and a portfolio of evidence to cover coursework.

This course has been designed especially for those who wish to pursue a career in the airline industry as cabin crew. You will learn how to co-ordinate a safe flight: preparing the cabin, getting the passengers aboard, demonstrating safety procedures, as well as learning how to deal with emergencies and develop your knowledge in our very own aircraft seating.

### STUDIES INCLUDE

- Airline health, safety and security
- Emergency procedures
- Roles of cabin crew
- Airport arrival processes
- English and Maths (if not already achieved at GCSE grade 9-4/A\*-C)

### PROGRESSION

Once you have completed this course, you will have the necessary skills and knowledge to successfully become employed as air cabin crew or airport operations staff or progress onto our Level 3 Extended Diploma courses within Aviation or Travel & Tourism.

## AVIATION ENVIRONMENT

LEVEL 2 DIPLOMA | 1 YEAR

### ENTRY REQUIREMENTS

5 GCSEs grade 9-3 (A\*-D) including English and Maths.

**Assessment:** Some written assignment tasks, short tests, observations and a portfolio of evidence to cover coursework.

This course has been designed for those who wish to pursue a career in the aviation industry. The course will provide you with a broad knowledge and understanding of the sector and equip you with the right skills to pursue a variety of different career opportunities in this interesting and challenging industry.

### STUDIES INCLUDE

- Aviation health, safety and security
- Aviation communications
- Airport check-in services
- Aircraft boarding and arrival services
- Support flight operations
- English and Maths (if not already achieved at GCSE grade 9-4/A\*-C)

### PROGRESSION

You will have the necessary skills and knowledge to work in an airport ground handling company including dispatch, checking in and boarding passengers or baggage handling.

You may also go onto an apprenticeship within the aviation industry to gain further skills recognised by employers; or you may choose to study on the Aviation Operations or Aeronautical Engineering Level 3 courses.



## AVIATION

LEVEL 3 EXTENDED DIPLOMA  
2 YEARS

168 UCAS Points (Grade D\*D\*D\*)

### ENTRY REQUIREMENTS

5 GCSEs grade 9-4 (A\*-C) including English and Maths or: a Level 2 Extended Certificate/Level 2 Diploma Merit/Distinction and GCSEs grade 9-4 (A\*-C) in English and Maths.

**Assessment:** Coursework.

This practical, work-related course is ideal for those that may wish to pursue a career in airport or aviation management, air traffic control, cargo or dispatch.

As part of this course, you'll learn about the aviation industry, developing an in-depth understanding of health and safety, security requirements, ramp handling operations, on-board passenger operations and team leadership.

You'll complete projects and assignments based on realistic workplace situations and activities. You'll take part in work experience opportunities during non-college days.

### STUDIES INCLUDE

- The UK aviation industry
- The principles of flight
- Security in the aviation industry
- Aviation geography
- Flight and aircraft operations
- Health and safety customer service
- Preparation for employment

### PROGRESSION

After successfully completing this course you will be prepared for progression within the aviation industry, employment or onto a university course to study courses such as airport/airlines operations or pilot training.

## TRAVEL & TOURISM

LEVEL 3 EXTENDED DIPLOMA  
2 YEARS

168 UCAS Points (Grade D\*D\*D\*)

### ENTRY REQUIREMENTS

5 GCSEs grade 9-4 (A\*-C) including English and Maths or: a Level 2 Extended Certificate/Level 2 Diploma Merit/Distinction and GCSEs grade 9-4 (A\*-C) in English and Maths.

**Assessment:** Some written assignment tasks, observations and a portfolio of evidence to cover coursework.

This practical, work-related course is ideal if you are seeking employment within the travel and tourism industry in roles such as cabin crew, travel agents and tour operators.

You will be set projects and assignments based on realistic work-place situations, activities and demands. You will also take part in work experience or a work based project during non-college days.

### STUDIES INCLUDE

- Travel and Tourism
- UK travel and tourism destinations
- European destinations
- Worldwide destinations
- The cruise industry
- Preparing for employment
- Working as a holiday representative
- Customer service

### PROGRESSION

You will have the chance to progress straight into employment in career roles such as a holiday representative, tour guide, cabin crew or cruise ship staff.

Or you may wish to start an apprenticeship or progress onto a higher level qualification in travel & tourism management or study at degree level at university.



## MEET CARSON

Travel & Tourism Aviation – Level 3

### What led you to choosing this subject?

I've always enjoyed flying and already have my Private Pilot's License (PPL).

I've also been inspired by the diaries of my Great Granddad who was a pilot for the American Airforce.

### How have you found tutor support at College?

The tutors have all worked in Aviation Operations so they have a really good understanding of the industry and a lot to share about their experiences.

In the first year of the course, the teaching was impeccable and set us down the right road early on.



# BUSINESS, ACCOUNTING & IT

Study the dynamic worlds of Business, IT, or Accounting! In these comprehensive courses, you will embark on a journey that takes you beyond the surface of these disciplines and into the very heart of how modern organisations operate and thrive.

Whether you're a budding entrepreneur, a tech enthusiast, or an aspiring financial guru, this course will equip you with the essential knowledge and skills needed to navigate through the world of work.

Studying business, accounting, or IT opens up a wide range of job opportunities and career paths. Here's a list of potential jobs you could pursue after completing your studies or following additional studies in these fields:


## CAREER PATHS:

- Business
- Marketing Manager
- Sales Representative
- Human Resources Specialist
- Management Consultant
- Business Analyst
- Entrepreneur/Business Owner
- Operations Manager
- Business Development Manager
- Supply Chain Manager
- Public Relations Specialist
- Accounting
- Certified Public Accountant (CPA)
- Financial Analyst
- Auditor
- Forensic Accountant
- Tax Consultant/Advisor
- Corporate Controller
- Financial Planner
- Cost Accountant
- Internal Auditor
- Information Technology (IT)
- Software Developer
- Network Administrator
- Data Analyst/Scientist
- Cyber security Analyst
- IT Project Manager
- Database Administrator
- IT Consultant
- Web Developer
- Cloud Solutions Architect
- IT Support Specialist

Remember that these are just a few examples, and each field offers a wide array of specialised roles and career paths. Your personal interests, strengths, and additional skills will also play a significant role in determining the specific job you pursue within these fields.

**THINKING ABOUT AN APPRENTICESHIP?**

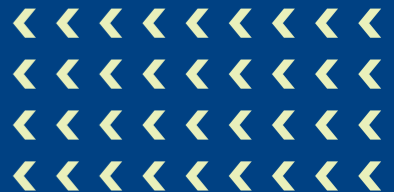
Check out the range of subjects we offer from Level 2 to Higher and Degree Level – page 14-15!




OPPORTUNITIES TO WORK ON 'LIVE' PROJECTS WITH LOCAL EMPLOYERS AND ENTREPRENEURS

REGULAR CV, CAREER DEVELOPMENT AND UCAS SUPPORT

IN-PERSON AND ONLINE EMPLOYER SEMINARS AND PRESENTATIONS ACROSS VARIOUS INDUSTRIES





## INFORMATION TECHNOLOGY

LEVEL 1 INTRODUCTORY DIPLOMA | 1 YEAR

### ENTRY REQUIREMENTS

4 GCSEs grade 9-2 (A\*-E) including English and Maths.

**Assessment: Coursework.**

This qualification introduces basic ICT practices and gives you a starting platform of essential ICT knowledge. This will also provide the starting knowledge for entry into the IT sector and prepare you for further learning or training at a higher level.

### STUDIES INCLUDE

- Developing digital information using IT
- Using digital communications technologies
- Creating a website
- Creating a computer program
- Developing a digital product
- Creating a digital animated graphic
- English and Maths (if not already achieved at GCSE grade 9-4/A\*-C)

### PROGRESSION

Enter into an entry or junior level job in business/IT related roles such as a Business Administrator, or it could lead to progression onto the ICT Level 2 Extended Certificate course or an IT Apprenticeship.

## DIGITAL TECHNOLOGY

LEVEL 2 DIPLOMA | 1 YEAR

### ENTRY REQUIREMENTS

5 GCSEs grade 9-3 (A\*-D) including English and Maths or: BTEC Level 1 Diploma/Extended Diploma and GCSEs grade 9-3 (A\*-D) in English and Maths.

**Assessment: Coursework and computer based exams.**

This qualification offers you experience of basic programming skills for software development, practical experience in developing and creative elements in graphics and web design.

You will also take part in work experience or a work based project.

### STUDIES INCLUDE

- The online world
- Technology systems
- A digital portfolio
- Creating digital graphics
- Software development
- Mobile phone applications
- English and Maths (if not already achieved at GCSE grade 9-4/A\*-C)

### PROGRESSION

You will have gained the knowledge, skills and understanding to progress onto a level 3 course at ESC, an apprenticeship or relevant employment in IT related roles.

## COMPUTING

LEVEL 3 EXTENDED DIPLOMA  
2 YEARS

168 UCAS Points (Grade D\*D\*D\*)

### ENTRY REQUIREMENTS

5 GCSEs grade 9-4 (A\*-C) including English and Maths or: BTEC NQF Level 2 Extended Certificate / BTEC QCF Level 2 Diploma Merit/Distinction and GCSEs grade 9-4 (A\*-C) in English and Maths.

**Assessment: Coursework and computer based exams.**

If you are interested in a career in computing in specialist areas such as systems analysis, software development or technical support then this course is for you. This is a practical, work-related course, which develops the necessary skills, knowledge and understanding required for the IT industry.

### STUDIES INCLUDE

- Principles of computer science
- Software design and development
- Computer games development
- Mobile app development
- Computer networking

### PROGRESSION

You can progress on to higher level qualification, higher apprenticeship, degree level course such as the foundation degree in Internet software development or enter the world of employment.

## DIGITAL PRODUCTION, DESIGN & DEVELOPMENT

LEVEL 3 | 2 YEARS

**T LEVEL** See page 16 for more info

168 UCAS Points (Grade D\*D\*D\*)

### ENTRY REQUIREMENTS

5 GCSEs grade 9-4 (A\*-C) including English, Maths and IT/Computing; or BTEC Level 2 Diploma/Extended Certificate Merit/Distinction in ICT/Computing and GCSEs grade 9-4 (A\*-C) in English and Maths.

**Assessment: Exams, practical projects, presentations and externally examined coursework tasks.**

**This qualification requires a mandatory 315 hours (minimum) industry placement**

This qualification has been developed for those who want to progress to a career in the digital sector, with a focus on software design and development. You will learn the skills and knowledge needed to design, implement and test software while also considering ethical principles and legal or regulatory requirements, and how to maintain and support software and analyse problems.

### STUDIES INCLUDE

- The digital environment and security
- Introduction to programming
- Impact of digital technologies
- Software design principles

### PROGRESSION

You can progress on to higher level qualification, higher apprenticeship, degree level course or employment in roles such as a UX Designer or Programme Developer.



## MEET ERIN

Business – Level 3

### Why did you decide to study at ESC?

ESC had the best business course – lots of the units seemed quite intriguing. I also liked that there is more independent learning opportunities here than at 6th form.

### Would you recommend ESC to a future student?

Definitely – especially if you're quite set on what you want to do as you can give your full attention to one subject. I also really like the atmosphere here.

### What are your future plans?

I'm not a Uni person so plan on building my business and being self-employed.

## ACCOUNTING

LEVEL 3 ADVANCED DIPLOMA  
1 YEAR

56 UCAS Points (Grade D)

### ENTRY REQUIREMENTS

AAT Accounting Level 2 or equivalent and 5 GCSEs grade 9-4 (A\*-C) including English and Maths.

**Assessment: Computer based exams.**

This is the second stage in the AAT suite of qualifications (following the AAT Level 2 Foundation Diploma).

This course will introduce higher level topics to further develop your understanding of accounting tasks and financial processes, such as maintaining cost accounting records and the preparation of reports and returns.

You will develop the important skills required by employers for entry to employment or self-employment. You will take part in work experience or employer engagement activities during non-college days.

### STUDIES INCLUDE

- Advanced bookkeeping and final accounts
- Indirect tax
- Management cost accounting
- Spreadsheets for accounting
- Professional ethics in accounting

### PROGRESSION

This course can lead to employment in a variety of accountancy and finance roles in both the public and private sectors; in roles such as a finance officer, assistant accountant or Bookkeeper.

Alternatively, you could choose to progress to higher level study at college or university.

## ACCOUNTING

LEVEL 3 | 2 YEAR

➤ **T LEVEL** See page 16 for more info

168 UCAS Points (Grade D\*D\*D\*)

### ENTRY REQUIREMENTS

5 GCSEs grade 9-4 (A\*-C) including English and Maths; or BTEC Level 2 Diploma/Extended Certificate Merit/Distinction in Accounting and GCSEs grade 9-4 (A\*-C) in English and Maths.

**Assessment: Written examinations and externally set projects.**

**This qualification requires a mandatory 315 hours (minimum) industry placement**

During this 2-year programme, students will develop the core knowledge and skills that are needed for entry to a range of accounting occupations.

### STUDIES INCLUDE

- The business environment
- Careers within the finance and accounting professions
- Regulation
- Professionalism and ethics/equality, diversity and inclusion
- Security and risk
- Professional services
- Fundamentals of law
- Fundamentals of financial accounting
- Technology
- Data driven innovation/analytics and design thinking
- Research skills
- Project/change management and administration
- Fundamentals of financial accounting (accounting pathway content)

### PROGRESSION

You can progress into the finance industry as a Finance Officer, Payroll Manager, Payroll Administrator or Accounting Technician.

## BUSINESS

LEVEL 1 INTRODUCTORY  
DIPLOMA | 1 YEAR

### ENTRY REQUIREMENTS

4 GCSEs grade 9-2 (A\*-E) including English and Maths.

**Assessment: Coursework.**

This qualification introduces business practices and gives you the breadth of essential knowledge, understanding and skills needed for today's business industry.

You will also acquire a variety of transferable skills that will help in all aspects of life, not just in the world of business.

You will also take part in work experience and a work based project during non-college days.

### STUDIES INCLUDE

- Developing a personal progression plan
- Being organised
- Working with others
- Researching a topic
- Branding a product
- Presenting a business idea
- Recording income and expenditure
- English and Maths (if not already achieved at GCSE grade 9-4/A\*-C)

### PROGRESSION

This course provides great progression routes onto our Business Level 2 course, or to develop skills that will be valuable in a variety of full-time roles such as Business Support Assistant, Junior Administrator and Client Services Clerk.

## BUSINESS

LEVEL 2 FIRST CERTIFICATE  
1 YEAR

### ENTRY REQUIREMENTS

5 GCSEs grade 9-3 (A\*-D) including English and Maths or: BTEC Level 1 Diploma (Merit) and GCSE grades 9-3 (A\*-D) in English and Maths.

**Assessment: Coursework and computer based exams (externally set).**

You'll develop awareness of new aspects of the business world and learn about the important skills required by employers, providing stepping stones for entry into employment.

Our tutors deliver practical activities, presentations and involvement with local businesses wherever possible. You will also complete work experience and a work based project during non-college days.

### STUDIES INCLUDE

- Enterprise in the business world
- Finance for business
- Principles of marketing
- Recruitment, selection and employment
- Law and consumer rights
- English and Maths (if not already achieved at GCSE grade 9-4/A\*-C)

### PROGRESSION

On successful completion you may continue onto the Business Level 3 qualification if you would like to gain the entry requirements for university or improve your future job prospects.

Some students have previously decided to progress directly onto an apprenticeship or employment in Office Admin or Marketing Assistant roles.

## BUSINESS

LEVEL 3 EXTENDED DIPLOMA  
2 YEARS

168 UCAS Points (Grade D\*D\*D\*)

### ENTRY REQUIREMENTS

5 GCSEs grade 9-4 (A\*-C) including English and Maths or: BTEC NQF Level 2 Extended Certificate Merit/Distinction and GCSEs grade 9-4 (A\*-C) in English and Maths

**Assessment: Coursework and computer based exams (externally set).**

A practical, work focused course which develops the necessary skills, knowledge and understanding to provide a sound, basic business education. The course is continuously assessed through assignments, project tasks and case studies.

A number of trips are organised during the year to relate your learning to the world of work. The course uses practical activities, presentations and involvement with local businesses wherever possible. You will also find and complete work experience during non-college days.

### STUDIES INCLUDE

- Finance
- Marketing (including Digital Marketing)
- Event Management
- International Business
- Business Management
- Law
- Marketing Research

### PROGRESSION

This course offers opportunities to progress to employment in a wide range of job roles across the business and digital industries.

Alternatively you may choose to go into higher education at ESC to study a Management FdA, or start an apprenticeship.

## MANAGEMENT & ADMINISTRATION

LEVEL 3 | 2 YEARS

➤ **T LEVEL** See page 16 for more info

168 UCAS Points (Grade D\*D\*D\*)

### ENTRY REQUIREMENTS

5 GCSEs grade 9-4 (A\*-C) including English, Maths and IT/Computing; or BTEC Level 2 Diploma/Extended Certificate Merit/Distinction in ICT/Computing and GCSEs grade 9-4 (A\*-C) in English and Maths.

**Assessment: Exams, practical projects, presentations and externally examined coursework tasks.**

During the course, you will develop the core knowledge and skills needed for entry into a range of business occupations by developing an understanding of a range of issues relating to the sector.

There will be a mixture of classroom-based teaching and learning and 'on-the-job' work as this qualification requires a mandatory 315 hours (minimum) industry placement which you must undertake and complete in order to be successfully certified.

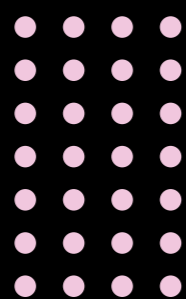
### STUDIES INCLUDE

- Organisational cultures and values
- Different types of stakeholders
- Project management theories
- Quality and compliance
- Testing software and hardware

### PROGRESSION

On completion you can progress onto higher education in the form of a HNC, HND or degree. Alternatively, you may also wish to progress onto an apprenticeship or head straight into employment in a business role.

# CREATIVE ARTS



Do you have an artistic flair that you're waiting to share with the world? Our exciting courses will challenge you to develop your creative skills even further and excel in your chosen discipline!

You'll have the chance to access our spacious studios including state-of-the-art multimedia Apple Mac studios – the perfect place for you to express yourself. We'll ensure you gain valuable practical experiences through our strong links with a wide range of employers where you will have numerous opportunities to work on live briefs and network with industry experts.

Our courses equip you with the skills and knowledge to display your work at the End of Year Exhibition, and to help prepare you for further education, university or the world of work.

We work in partnership with the University of the Arts London (UAL) a vibrant international centre for innovative teaching and research in arts, design, fashion, communication and the performing arts.

## THINGS TO NOTE BEFORE YOU START

There will be a cost for any trips and some courses have kit costs

Financial help may be available. Please contact our Client Services team on 01737 788444 for more information.

## COURSES INCLUDE:

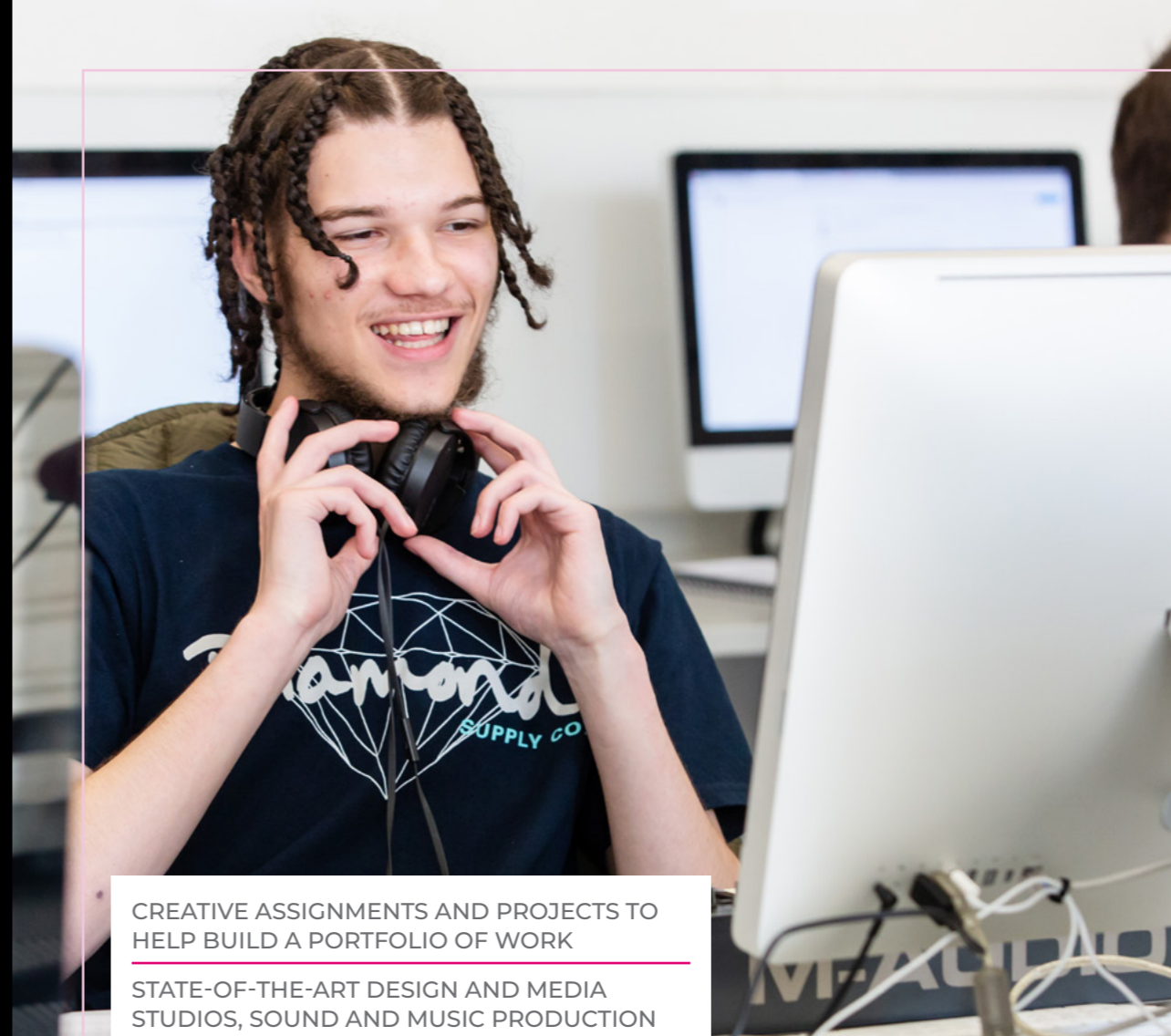
- Going on a range of cultural and educational trips
- Taking part in internal and external competitions
- Working on live projects with a range of employers
- Collaborating with local artists
- Showcasing your work at the End of Year Exhibition
- Talks and presentations from industry experts

## CAREER PATHS:

- Animator
- Costume Designer
- Filmmaker
- Games Designer
- Graphic Designer
- Illustrator
- Sound & Music Producer
- Photographer

**“BEING AT ESC ALLOWS ME TO BE MORE EXPRESSIVE AND CREATIVE – SINCE COMING HERE, I’VE FELT MORE ‘ME’.”**

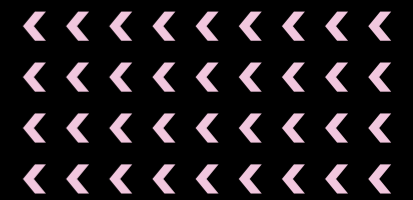
CHARLOTTE  
ART, DESIGN & COMMUNICATION  
LEVEL 3



CREATIVE ASSIGNMENTS AND PROJECTS TO HELP BUILD A PORTFOLIO OF WORK

STATE-OF-THE-ART DESIGN AND MEDIA STUDIOS, SOUND AND MUSIC PRODUCTION SUITES, THEATRICAL MAKE-UP AND PROSTHETICS STUDIOS, APPLE MAC SUITES AND MORE!

COURSES TAUGHT BY HIGHLY SKILLED AND DEDICATED TUTORS MADE UP OF PROFESSIONAL ARTISTS, MUSIC AND SOUND PRODUCERS, FASHION AND GRAPHIC DESIGNERS, WIG AND PROSTHETICS EXPERTS, PHOTOGRAPHERS AND FILM EDITORS





## OUR FACILITIES

Reigate School of Art has a range of excellent studio facilities which provide a friendly and creatively stimulating environment to work in, ensuring students have the latest resources needed to develop their creative and professional potential including:

- › Art and design studios
- › Games design studio
- › 3D modelling and animation studio
- › Photography studios and darkroom
- › Recording studio, production and editing suites
- › Film studio with green screens and editing suite
- › Printmaking studio
- › Wet and dry 3D studios
- › Theatrical make-up and prosthetics wet and dry studios
- › Large number of Macs with industry standard software including Apple's Logic Pro, Avid Pro-Tools and the Adobe Creative Cloud apps – InDesign, Illustrator, Photoshop, After Effects and Premier Pro.

**ual**: awarding  
body

## PROGRESSION ROUTES

Reigate School of Art students have various routes for progression including:

### FURTHER EDUCATION

Internal progression to a wide range of courses within Reigate School of Art.

### HIGHER EDUCATION

Many students progress to prestigious art schools and universities

### EMPLOYMENT

Some students progress directly into employment or self-employment in the creative industries which offers a varied choice of careers.

### CAREER PATHS AND JOB ROLES CAN INCLUDE:

- › Art & Design Career and job roles include:
- › Artist
- › Graphic Designer
- › Illustrator
- › Fashion Designer
- › Interior Designer
- › Art Director

### FILM & PHOTOGRAPHY CAREER OR JOB ROLES INCLUDE:

- › Cinematographer/ Director of Photography
- › Photojournalist
- › Videographer
- › Visual Effects (VFX) Artist
- › Documentary Filmmaker
- › Advertising Photographer
- › Film Critic/ Reviewer
- › Photographer
- › Film Producer
- › Video Editor

## CREATIVE MEDIA & GAMES DESIGN CAREER PATH INCLUDE:

- › Animator
- › Game/ Character Designer
- › Visual Effects (VFX) Artist
- › Storyboard Artist
- › 3D Modeller
- › Video Game Tester/QA Tester
- › Concept Artist
- › Motion Graphics Designer
- › Sound Designer
- › UI/UX Designer
- › Game Writer/ Producer
- › Rigging Artist

## MUSIC AND SOUND PRODUCTION CAREER PATHS INCLUDE:

- › Music Producer
- › Audio Engineer
- › Sound Designer
- › Mixing / Mastering Engineer
- › Composer
- › Film and TV Post-Production Mixer
- › Live Sound Engineer
- › Audio Post-Production Specialist
- › Remote Recording Engineer.
- › Podcast Producer
- › Game Audio Designer
- › Synthesizer Designer
- › Studio Technician

## ART, DESIGN & MEDIA UAL<sup>†</sup> LEVEL 1 DIPLOMA | 1 YEAR

### ENTRY REQUIREMENTS

4 GCSEs grade 9-2 (A\*-E) including Art or Design Technology, English and Maths.

**Assessment: Portfolio of work.**

This course offers a broad introduction to the creative sector and is suitable for those with very basic previous practical experience looking to explore, develop and test their creativity.

You will improve and explore your art and design skills whilst developing the personal skills and qualities needed for work to help you achieve your full potential. Start your journey on the route to a career in the creative industries.

### STUDIES INCLUDE

- Drawing
- Painting
- Printmaking
- Mixed media
- Basic introduction to media
- Self directed final project
- English and Maths (if not already achieved at GCSE grade 9-4/A\*-C)

### PROGRESSION

Completing this course will result in you developing a portfolio of work that could help support progression into a range of qualifications at Level 2.

Typically, students in the past have progressed onto the Art & Design Level 2 Diploma and Creative Media Level 2 Diploma.

<sup>†</sup> University of the Arts London Awarding Body

## ART & DESIGN UAL<sup>†</sup> LEVEL 2 DIPLOMA | 1 YEAR

### ENTRY REQUIREMENTS

5 GCSEs grade 9-3 (A\*-D) including Art or Design Technology, English and Maths; or Level 1 Diploma Merit/Distinction and GCSEs grade 9-3 (A\*-D) in English and Maths.

**Assessment: Portfolio of work.**

This course offers a more focused approach to strengthening your art and design skills and is suitable for those with previous basic practical experience.

You will explore the materials, methods and processes that support art and design activities, and begin to develop some related technical skills in order to help you to achieve your full potential.

### STUDIES INCLUDE

- Drawing and painting
- 3D work
- Photography
- Digital imaging
- Graphics
- Animation
- Self directed final project
- English and Maths (if not already achieved at GCSE grade 9-4/A\*-C)

### PROGRESSION

This course provides a great progression route into the Art, Design & Communication Level 3 Extended Diploma at ESC specialising in subjects such as: graphic design, illustration, animation, 3D design, photography, fine art, film and more.

Alternatively, you may wish to progress directly into entry level roles in the creative industries.

## ART, DESIGN & COMMUNICATION UAL<sup>†</sup> LEVEL 3 EXTENDED DIPLOMA IN CREATIVE PRACTICE | 2 YEARS

168 UCAS Points (Grade D)

### ENTRY REQUIREMENTS

5 GCSEs grade 9-4 (A\*-C) including Art or Design Technology, English and Maths; or Level 2 Diploma Merit/Distinction and GCSEs grade 9-4 (A\*-C) in English and Maths. Mature students with or without formal qualifications are encouraged to apply.

**Assessment: Portfolio of work.**

This is a vocational alternative to A Levels offering a solid grounding to a specialism area of your choice. Ideal for those who want to explore and experiment with a range of different specialist areas within the creative industries. Support and guidance is provided for portfolio preparation, UCAS applications and job interviews.

### STUDIES INCLUDE

- Fashion and textiles
- Graphic and multimedia design
- 3D design
- Fine art and illustration
- Animation
- Prop making
- Self directed final project

### PROGRESSION

Successful completion of this course will provide you with the necessary industry skills and understanding for an entry level role or training programme.

Further progression opportunities are available at the College on our Art & Design Level 4 Foundation Diploma as well as Higher Education courses in Graphic and Digital Design, Photography and more.

## ART & DESIGN UAL<sup>†</sup> LEVEL 4 FOUNDATION DIPLOMA | 1 YEAR

### ENTRY REQUIREMENTS

1 A Level (or equivalent) in a relevant subject and GCSEs grade 9-4 (A\*-C) in English and Maths; or Level 3 Extended Diploma Merit/Distinction in a relevant subject and GCSEs grade 9-4 (A\*-C) in English and Maths. Mature students with or without formal qualifications may have relevant experience and are encouraged to apply.

**Assessment: Portfolio of practical work and written assignments.**

Aimed at post A Level students as well as mature students with relevant experience or qualifications, this course is a required prerequisite for most university level creative subject areas.

You will study a very broad range of subjects that include painting and drawing as well as workshops in 3D, traditional and non-traditional skills. There is a focus on materials, processes and methods as you develop your own considered approach. You will need to be self-motivated as you will be set challenging work. The Foundation Diploma programme at Reigate School of Art has a reputation for ensuring individual care and attention to its students.

Support and guidance is provided for portfolio preparation for UCAS applications or job interviews. The Foundation Diploma qualification is nationally regulated by Ofqual and awarded by the University of the Arts London Awarding Body.

### STUDIES INCLUDE

- Art history
- Fine art, painting and installation
- Graphic design and illustration
- Fashion and textiles
- 3D design and crafts
- Animation
- Photography
- Theatre design
- Model making and prosthetics
- Games design
- Architecture
- Self directed final project

### PROGRESSION

This foundation course has a very high reputation for placing students on exceptional undergraduate degree or Higher National Diploma (HND) programmes across the country; across pathways in art, design and related subjects. Further progression opportunities are available at the ESC on our Higher Education courses in Graphic and Digital Design, Photography and more.

Alternatively, you may wish to progress directly into entry level roles in the creative industries.



## MEET CHARLOTTE

Art, Design & Communication – Level 3

**What do you enjoy most about your course?**

I really like the freedom of it. For our first three projects, we were given structured briefs across different mediums, which was great for exploring what you liked or didn't like.

For our Final Project this year, we were just given the title 'Extinction and Existence' for us to explore and interpret using our own research and ideas.

**Have you done any work experience during this course?**

We did a work experience challenge set by local packing company Curtis Packaging where we designed sustainable packaging to industry briefs.

Although this really forced me to think outside my comfort zone (I hadn't really considered everything that goes into packaging!), I got third prize!

## CREATIVE MEDIA

UAL<sup>†</sup> LEVEL 1 DIPLOMA | 1 YEAR

### ENTRY REQUIREMENTS

4 GCSEs grade 9-2 (A\*-E) including, English and Maths.

**Assessment: Portfolio of practical work.**

This course offers a broad introduction to Creative Media and is suitable for those with very basic previous practical experience.

You will explore a range of media skills whilst developing the personal skills and qualities needed for work to help you achieve your full potential.

### STUDIES INCLUDE

- Photography & Photoshop
- Games design
- Film production
- Sound production
- Self directed final project

### PROGRESSION

This course provides the progression route for a career in the creative industries with employment at a Junior Assistant level, or within the wider commercial/creative based industries. It can also provide the route to progress onto the Art & Design Level 2 Diploma or the Creative Media Level 2 Diploma.

<sup>†</sup> University of the Arts London Awarding Body

## CREATIVE MEDIA

UAL<sup>†</sup> LEVEL 2 DIPLOMA IN CREATIVE MEDIA PRODUCTION & TECHNOLOGY | 1 YEAR

### ENTRY REQUIREMENTS

5 GCSEs grade 9-3 (A\*-D) including English and Maths; or Level 1 Diploma Merit/Distinction and GCSEs grade 9-3 (A\*-D) in English and Maths.

**Assessment: Portfolio of work.**

This course gives a broad introduction to the diversity of roles and responsibilities in the media sector and the personal and professional characteristics needed for a career in the creative media industry.

You will learn the basic understanding of sound as well as still and moving image. Improve and explore your skills and techniques, whilst developing the personal skills and qualities needed for further study or work.

### STUDIES INCLUDE

- Photography
- Film production
- Games design
- 3D modelling
- Sound production
- Understanding your audience
- Research
- Personal media production project
- Self directed final project
- English and Maths (if not already achieved at GCSE grade 9-4/A\*-C)

### PROGRESSION

Typically, previous students have progressed onto the Games, Animation & 3D Modelling Level 3 Extended Diploma and Film & TV Production Level 3 Extended Diploma, often specialising in an area of interest.

## GAMES, ANIMATION & 3D MODELLING

UAL<sup>†</sup> LEVEL 3 EXTENDED DIPLOMA IN CREATIVE MEDIA PRODUCTION & TECHNOLOGY 2 YEARS

168 UCAS Points (Grade D)

### ENTRY REQUIREMENTS

5 GCSEs grade 9-4 (A\*-C) including English and Maths; or Level 2 Diploma Merit/Distinction and GCSEs grade 9-4 (A\*-C) in English and Maths. Mature students with or without formal qualifications are encouraged to apply.

**Assessment: Portfolio of work.**

This course is a vocational alternative to the A Level route and provides a practical approach to gaining the skills needed for progression into a career in the gaming or wider creative industry. It will introduce you to both the creative and technical aspects of computer games, animation and 3D modelling through a variety of creative project briefs.

### STUDIES INCLUDE

- Games design, development and production
- Graphic design
- Animation (2D and 3D)
- 3D modelling
- Computer game platforms and technologies
- Sound production
- Programming
- Self directed final project

### PROGRESSION

This course aims to provide you with the necessary skills for employment in the creative industry, or for progression to degree level study at other training institutions and universities.

## FILM & TV PRODUCTION PHOTOGRAPHY

UAL<sup>†</sup> LEVEL 3 EXTENDED DIPLOMA IN CREATIVE MEDIA PRODUCTION & TECHNOLOGY 2 YEARS

168 UCAS Points (Grade D)

### ENTRY REQUIREMENTS

5 GCSEs grade 9-4 (A\*-C) including English and Maths; or Level 2 Diploma Merit/Distinction and GCSEs grade 9-4 (A\*-C) in English and Maths. Mature students with or without formal qualifications are encouraged to apply.

**Assessment: Portfolio of work.**

This course is a vocational alternative to the A Level route and has been designed to develop the skills required for progression into a career in the media industries or on to university.

You will learn different aspects of the film and TV industry and gain an understanding of the general context of contemporary production.

### STUDIES INCLUDE

- Film and television studies
- Script writing for media products
- Design and research skills
- Factual programme production
- Lens based media production
- Critical and contextual studies in media
- Audio and visual production and technology
- Media processes and technical skills
- Creative media production project
- Self directed final project

### PROGRESSION

Completion of this course is equivalent to three A Levels and will provide you with a pathway to further study at ESC at degree level, or into employment within the media industry.

UAL<sup>†</sup> LEVEL 3 EXTENDED DIPLOMA IN CREATIVE MEDIA PRODUCTION & TECHNOLOGY 2 YEARS

168 UCAS Points (Grade D)

### ENTRY REQUIREMENTS

5 GCSEs grade 9-4 (A\*-C) including English and Maths; or Level 2 Diploma Merit/Distinction and GCSEs grade 9-4 (A\*-C) in English and Maths. Mature students with or without formal qualifications are encouraged to apply.

**Assessment: Portfolio of work.**

This course is a vocational alternative to the A Level route and gives you a thorough grounding in a range of traditional and contemporary photographic skills and techniques, introducing the essential skills needed to build your photographic portfolio. You will develop your visual style and knowledge, through exploring a variety of creative project briefs.

### STUDIES INCLUDE

- Visual communication
- Documentary and editorial photography
- Creating personal photo-stories
- Digital imaging and manipulation
- Alternative techniques and processes
- Traditional darkroom techniques
- Research into contemporary photographers
- Critical and contextual studies
- Professional practice (exhibiting)
- Self directed final project

### PROGRESSION

Progression to a range of Higher Education courses at ESC including Photography FdA and the Photography BA (Hons) Top-Up Degree.



## MEET MORGAN

Film & TV Production – Level 3

### What led you to choosing this course?

I really enjoyed the filming and editing elements of Creative Media at GCSE, so decided on this course to develop my skills and learn more about the industry.

Outside of college, I run multiple social media accounts and am founder and content-creator of films content for YouTube.

### What do you enjoy most about your course?

I really like the availability of resources such as the Film & TV studio and the Photography studio.

I've been able to take reshoots and speak with my tutor on how to make any improvements, including angles, lighting and posture of the model.

I've also particularly enjoyed my Final Major Project, having the creative freedom to explore any mediums for the topics.



## NEUTRAL GROUND PRODUCTIONS

Neutral Ground is a platform designed by students for the celebration and promotion of their creative skills and talent.

All creative and business aspects of Neutral Ground are managed by students studying Art & Design, Sound & Music, Photography, Film & TV or Games Design at Reigate School of Art. The emphasis is on original material, collaboration and artist creation.

## SOUND & MUSIC PRODUCTION

UAL† LEVEL 2 DIPLOMA IN MUSIC PERFORMANCE & PRODUCTION  
2 YEARS

### ENTRY REQUIREMENTS

5 GCSEs grade 9-3 (A\* – D) that include English and Maths or a Level 1 Diploma at Merit/Distinction and GCSE English and Maths grade 9-3 (A\* – D).

**Assessment:** There are no exams and assessment is by coursework. Formative assessment will take place during projects in one-to-one and group tutorials, peer assessment and presentations. At the end of each project, a formal summative assessment and progress review will take place.

This course provides a grounding in the principles and practices of music performance and/or production.

It offers exciting opportunities to learn techniques working in professional sound studios and Mac suites running Logic & Pro Tools. The programme serves as an introductory pathway to the Level 3 course

### STUDIES INCLUDE

- Introduction to music performance and production
- Listening skills for music
- Music composition and sound design
- Research for music performance and Production
- Performance and production skills and practice
- Self-designed music project
- English and Maths (if not already achieved at GCSE grade 9-4/A\*-C)

### PROGRESSION

Achieving a merit or distinction may allow progression to further study at Level 3 or into employment in the creative industries.

## SOUND & MUSIC PRODUCTION

UAL† LEVEL 3 EXTENDED DIPLOMA IN MUSIC PERFORMANCE & PRODUCTION  
2 YEARS

168 UCAS Points (Grade D)

### ENTRY REQUIREMENTS

5 GCSEs grade 9-4 (A\*-C) including English and Maths; or Level 2 Diploma Merit/Distinction and GCSEs grade 9-4 (A\*-C) in English and Maths.

**Assessment:** Portfolio of work.

The course is a vocational alternative to the A Level route and provides a thorough understanding of career opportunities within the sound and music industries. Learn a range of contemporary production techniques and gain the skills needed for progression to university level study or employment.

### STUDIES INCLUDE

- Music production techniques
- Sequencing systems and software
- The sound and music industry
- Contemporary music history
- Synthesis and sound design
- Self directed final project

### PROGRESSION

This course is equivalent to three A Levels and will provide you with a pathway to further study at degree level at university or employment in the sound and music industry including: recording studios, radio stations, music management, film and television and any other areas of media that incorporates audio.

Alternatively this course can lead to further study across a range of Higher Education courses at ESC, such as the Sound & Music Production Certificate in Higher Education or Sound & Music Production FdA.



## MEET ANTONELLO

Sound & Music Production – Level 3

Have you done any work experience during this course?

Luckily, I went to Autograph Studios, which hires theatre music equipment. We supported the live production of Hamilton, which was an incredible experience! Before the show, we prepped the coiling electrical wires and tested the speaker system. Seeing the complex set-up for the musicians' pit underneath the stage was so interesting. The show was amazing and gave me a new appreciation for theatre and live mixing.

Would you recommend ESC to a future student? If so, why?

Definitely! The teaching is excellent for my course – tutors care about your learning. There's also a really supportive environment – people won't judge you for what you're trying to accomplish.



# CONSTRUCTION

Are you looking for a practical based career where you're working with your hands? Then a course in the construction industry could be for you.

Our industry-experienced tutors will support you in developing the necessary practical skills and theoretical knowledge you need to excel in your chosen industry.

The College has strong links with employers, giving you the opportunity to hear from industry leaders and gain additional experience alongside your course.

Future career paths in these sectors will likely evolve with technological advancements, sustainable practices, and innovative construction techniques, creating opportunities for professionals to specialise in green construction, Building Information Modelling (BIM), renewable energy integration, and smart home automation.

- Masonry Contractor
- Brick and Stone Mason
- Block Mason
- Restoration Mason
- Masonry Estimator
- Masonry Labourer
- Tuckpointer
- Carpentry
- Carpenter
- Finish Carpenter
- Cabinetmaker
- Framing Carpenter
- Trim Carpenter
- Furniture Carpenter
- Formwork Carpenter
- Restoration Carpenter
- Joiner
- Electrical
- Electrician
- Electrical Contractor
- Journeyman Electrician
- Master Electrician
- Electrical Engineer
- Electrical Technician
- Lineworker (Powerline Technician)
- Control Technician
- Wiring Technician

Remember that job titles and responsibilities can vary depending on location, company, and specific projects. Each sector offers a wide range of job opportunities with varying levels of experience and specialisation.

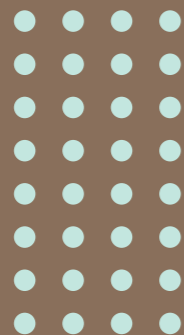
**THINKING ABOUT AN APPRENTICESHIP?**

Check out the range of subjects we offer from Level 2 to Higher and Degree Level – page 14-15!



## CAREER PATHS:

- Construction
- General Contractor
- Project Manager
- Construction Manager
- Site Supervisor
- Estimator
- Construction Labourer
- Heavy Equipment Operator
- Safety Manager
- Quality Control Inspector
- Construction Engineer
- Bricklaying
- Bricklayer



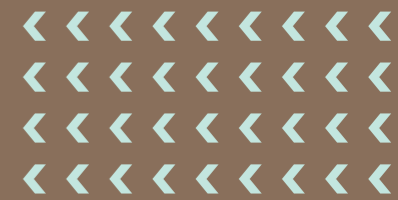
WORKING ALONGSIDE LOCAL EMPLOYERS DELIVERING EDUCATIONAL TALKS VIRTUALLY AND IN-PERSON

---

PURPOSE-BUILT WORKSHOPS IN BRICKWORK, PLUMBING, ELECTRICAL INSTALLATION, CARPENTRY & JOINERY

---

COURSES ARE DEVELOPED AROUND INDUSTRY NEEDS IN COLLABORATION WITH LOCAL EMPLOYERS AND PROFESSIONALS



## BRICKWORK

LEVEL 1 DIPLOMA | 1 YEAR

### ENTRY REQUIREMENTS

4 GCSEs grade 9-2 (A\*-E) including English and Maths.

**Note:** Appropriate uniform/PPE is required in workshops and classrooms.

**Assessment:** Online City & Guilds tests and a portfolio of evidence.

This course will teach you a combination of practical skills and theory; developing your basic construction knowledge and core skills that you need to work safely and confidently in the construction industry. It is ideally suited to those of you who want to progress onto further training or an apprenticeship.

Whilst studying bricklaying you will learn a variety of skills to enable you to build, repair and maintain the country's housing stock.

### STUDIES INCLUDE

- Carrying out block laying
- Carrying out bricklaying
- Carrying out cavity walling activities
- Contribute to setting out and building of masonry structures up to damp proof course
- English and Maths (if not already achieved at GCSE grade 9-4/A\*-C)

### PROGRESSION

Successful completion of this course will allow you the opportunity to progress onto our Brickwork Level 2 Diploma and also open training opportunities on an apprenticeship within the construction industry.

Those who complete successfully will also be able to support a skilled worker as a Trainee Bricklayer on a construction site, after gaining a Construction Skills Certification Scheme (CSCS) card.

## BRICKWORK

LEVEL 2 DIPLOMA | 1 YEAR

### ENTRY REQUIREMENTS

Brickwork Level 1 Diploma and GCSEs grade 9-3 (A\*-D) in English and Maths.

**Note:** Appropriate uniform/PPE is required in workshops and classrooms.

**Assessment:** Online City & Guilds tests and a portfolio of evidence.

Building on the bricklaying skills learnt during the level 1 programme, you will extend your skills and knowledge with more challenging activities comprising both practical hands-on training in our industry-standard workshops and classroom-based theory lessons.

### STUDIES INCLUDE

- Interpreting working drawings to set out masonry structures
- Producing thin joint masonry and masonry cladding
- Building solid walling, isolated and attached piers
- Construct cavity walling forming masonry structures
- English and Maths (if not already achieved at GCSE grade 9-4/A\*-C)

### PROGRESSION

After successfully passing Brickwork Level 2, you may wish to consider expanding your knowledge working on building sites, completing basic walling activities or alternatively taking on an apprenticeship in Brickwork to further your experience learning on the job.

## CARPENTRY & JOINERY

LEVEL 1 DIPLOMA | 1 YEAR

### ENTRY REQUIREMENTS

4 GCSEs grade 9-2 (A\*-E) including English and Maths.

**Note:** Appropriate uniform/PPE is required in workshops and classrooms.

**Assessment:** Online City & Guilds tests and a portfolio of evidence.

This Level 1 qualification provides the basic fundamental practical skills required by someone aspiring to be a Carpenter. You will learn, develop and practise the skills required for employment and/or career progression in carpentry or joinery.

You will be taught how to prepare and use carpentry and joinery portable power tools and how to develop the craft and hand-skills.

### STUDIES INCLUDE

- Producing basic woodworking joints
- Principles of building construction, information and communication
- Health and safety
- Maintain and use carpentry and joinery hand tools
- Prepare and use carpentry and joinery portable power tools
- English and Maths (if not already achieved at GCSE grade 9-4/A\*-C)

### STUDIES INCLUDE

Typically students have progressed onto the Carpentry & Joinery Level 2 Diploma at ESC to enhance their skills.

Alternatively you may wish to secure an Apprenticeship with an employer and earn whilst you learn.

Those who successfully complete will be able to support a skilled worker as a Labourer on a construction site, after gaining a Construction Skills Certification Scheme (CSCS) card.

## CARPENTRY (BENCH OR SITE)

LEVEL 2 DIPLOMA | 1 YEAR

### ENTRY REQUIREMENTS

Carpentry & Joinery Level 1 Diploma and GCSEs grade 9-3 (A\*-D) in English and Maths.

**Note:** Appropriate uniform/PPE is required in workshops and classrooms.

**Assessment:** Online City & Guilds tests and a portfolio of evidence.

After learning the basic skills taught at Level 1, this Level 2 qualification focuses on the woodwork activities essential to working as a site carpenter.

You will cover the key topics of health and safety, communication and working in the construction industry, and learning about erecting and fitting timber, creating woodworking joints, frames, doors and windows.

### STUDIES INCLUDE

- First fix flooring and roofing, frames, partitions and stairs
- Principles of construction
- Carrying out second fixing operations
- Carrying out carpentry maintenance
- Maintain and use fixed bench saw
- English or Maths (if not both already achieved at GCSE grade 9-4/A\*-C)

### STUDIES INCLUDE

You will have the necessary skills and knowledge to work and carry out basic carpentry operations either on building sites or at a manufacturing facility.

You may wish to go on and study one of the new T Level qualifications we have on offer or take on an apprenticeship from our extensive offer in Construction.

## CONSTRUCTION MULTI-SKILLS

LEVEL 1 DIPLOMA | 1 YEAR

### ENTRY REQUIREMENTS

Few formal qualifications, ideally 4 GCSEs grade 9-1 (A\*-G).

**Note:** Appropriate uniform/PPE is required in workshops and classrooms.

**Assessment:** Online City & Guilds tests and portfolio of evidence.

This qualification is designed for those seeking an introductory route into the construction industry. You will be introduced to the initial skills, knowledge and understanding required to enter the construction sector across areas such as painting and decorating, carpentry and brickwork; helping you prepare to progress to higher level related qualifications.

### STUDIES INCLUDE

- Brickwork
- Carpentry
- Painting and decorating
- Safe working practices in construction
- Health and safety
- Building methods and construction technology
- English and Maths (if not already achieved at GCSE grade 9-4/A\*-C)

### PROGRESSION

If you complete the course successfully, you will be in a position to apply for an Apprenticeship or progress onto a level 1 or 2 diploma across a variety of disciplines at ESC.

Those who successfully complete the course will be able to also support a skilled worker as a Labourer on a construction site, after gaining a Construction Skills Certification Scheme (CSCS) card.



## MEET FINLEY

Carpentry & Joinery – Level 1

### What led you to choose this course?

I was inspired by my dad who is a bench joiner and owns a company making sash windows and doors. I work alongside him once a week, watching and learning. I also really liked design technology at school.

### Why did you decide to study at ESC?

ESC is local to me and good. At school, a 6th Form College was suggested to me but although, I don't particularly like academic study. I'm more of a doer and like making stuff. Level 1 Diploma in Carpentry & Joinery



**CONSTRUCTION STUDENTS ENJOY A RANGE OF VISITS TO LIVE CONSTRUCTION SITES TO EXPERIENCE WHAT IT'S LIKE TO WORK ON A LARGE SCALE CONSTRUCTION SITE.**



## DESIGN, SURVEYING & PLANNING FOR CONSTRUCTION

(SURVEYING & DESIGN FOR CONSTRUCTION & THE BUILT ENVIRONMENT) LEVEL 3  
2 YEARS

➤ **T LEVEL** See page 16 for more info

168 UCAS Points (Grade D\*D\*D\*)

### ENTRY REQUIREMENTS

5 GCSEs grade 9-4 (A\*-C) including English and Maths; or BTEC Level 2 Diploma/Extended Certificate in Construction and GCSEs grade 9-4 (A\*-C) in English and Maths.

**Assessment:** Practical projects and externally set coursework/exams.

This technical qualification is intended for those who want to progress to a career in the construction sector, focusing on surveying and design.

You will cover specialist units such as how to measure, analyse and design in the built environment. Whilst on your employer led work placement you will complete an employer set project, which is an essential part of the overall qualification.

### STUDIES INCLUDE

- Health and safety
- Building and digital technology
- Mathematical techniques
- Sustainability
- Project management and law

### PROGRESSION

On successful completion of your T Level, you can progress onto a job/apprenticeship in construction in your chosen occupational specialism, a relevant Higher National Certificate/Diploma at ESC or construction degree programme at university.

## ELECTRICAL INSTALLATION

LEVEL 1 | 1 YEAR

### ENTRY REQUIREMENTS

GCSE grade 3/D in Maths, English and a science

**Assessment:** Assignment based

### STUDIES INCLUDE

- Health & Safety
- Construction site knowledge
- Site preparation
- Practical electrical tasks
- wiring and fabrication
- Environmental & sustainability studies
- Electrical science and technology

### PROGRESSION

Electrical Installation Level 2

## ELECTRICAL INSTALLATION

LEVEL 2 DIPLOMA | 1 YEAR

### ENTRY REQUIREMENTS

4 GCSEs grade 9-4 (A\*-C) including Science, English and Maths.

**Note:** Appropriate uniform/PPE is required in workshops and classrooms.

**Assessment:** Online City & Guilds tests and a portfolio of evidence.

This qualification provides you with the underlying knowledge and abilities needed to progress in electrical installation and will allow you to support a fully qualified electrician on site.

Using a mix of classroom-based and project work, you will learn how to fabricate containment, install and terminate cables, inspect and test electrical installations, diagnose and rectify electrical faults, as well as learning the underpinning industry regulations and electrical science.

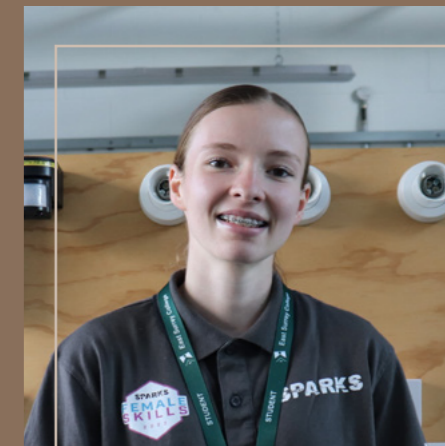
### STUDIES INCLUDE

- Health and safety in building services
- Principles of electrical science
- Electrical installations technology
- Installation of wiring systems and enclosures

### PROGRESSION

You will have the necessary skills and knowledge to work and carry out basic electrical operations.

Many of our students have secured successful employment working alongside a fully qualified electrician or have gone onto an apprenticeship within the industry.



## MEET CAITLIN-ROSE

Carpentry & Joinery – Level 1

**How are you finding the teaching/support?**

My tutor, Tony, is brilliant! He's had a long career in the industry and is very passionate about it. I'd like to be like that when I'm older – inspiring the younger generation.

My tutor has really encouraged me to enter competitions to test my skills and get my name out there within the industry. So far this year, I've won the London South East Female Skills Competition and was a National Finalist in the Sparks Magazine Female Skills Competition. In both competitions, I had to build a domestic electrical rig to a specific design brief to showcase my skills.

**What are your plans for the future?**

In the future, I want to specialise in Design or Electrical Operations Management.

## PAINTING & DECORATING

LEVEL 1 DIPLOMA | 1 YEAR

### ENTRY REQUIREMENTS

4 GCSEs grade 9-2 (A\*-E) including English and Maths.

**Note:** Appropriate uniform/PPE is required in workshops and classrooms.

**Assessment:** Online City & Guilds tests and a portfolio of evidence.

This qualification is for those who wish to take their first step towards a career as a painter and decorator in the construction industry. You will learn about paint systems, application techniques and decorative finishes.

### STUDIES INCLUDE

- Preparing surfaces for decoration
- Applying paint systems by brush and roller
- Applying wallpaper
- Producing decorative finishes
- English and Maths (if not already achieved at GCSE grade 9-4/A\*-C)

### PROGRESSION

Those who successfully complete this course may wish to stay on at ESC and progress onto the Painting & Decorating Level 2 course, or enter employment in a junior/entry level role in the painting and decorating sector, or general construction industries, or alternatively take on an apprenticeship.



## PAINTING & DECORATING

LEVEL 2 DIPLOMA | 1 YEAR

### ENTRY REQUIREMENTS

Painting & Decorating Level 1 Diploma and GCSEs grade 9-3 (A\*-D) English and Maths.

**Note:** Appropriate uniform/PPE is required in workshops and classrooms.

**Assessment:** Online City & Guilds tests and a portfolio of evidence.

Building on the skills learnt on the Level 1 programme, you will extend your skills and knowledge with more challenging activities, to enhance the knowledge, skills and confidence required to work competently within the painting and decorating industry.

### STUDIES INCLUDE

- Preparing surfaces for decoration
- Applying paint systems by brush and roller to a variety of surfaces
- Applying foundation and plain papers
- Producing specialist decorative finishes
- Applying and creating colour
- English and Maths (if not already achieved at GCSE grade 9-4/A\*-C)

### PROGRESSION

After successfully passing the Level 2 Diploma in Painting & Decorating, you may wish to consider expanding your knowledge working on building sites, completing basic painting and decorating activities, or start an apprenticeship from our extensive offer in Construction.

## PLUMBING

LEVEL 1 DIPLOMA | 1 YEAR

### ENTRY REQUIREMENTS

4 GCSEs grade 9-2 (A\*-E) including English and Maths.

**Note:** Appropriate uniform/PPE is required in workshops and classrooms.

**Assessment:** Online City & Guilds tests and a portfolio of evidence.

This qualification develops the skills that employers are looking for, and introduces you to the practical plumbing skills required in the trade. You will learn about the installation and maintenance of plumbing systems through a combination of practical experience and theory.

### STUDIES INCLUDE

- Understanding the structure of the industry
- Different types of materials used in the plumbing industry
- Basic pipe bending and soldering skills
- Basic pipe runs for hot and cold systems
- English and Maths (if not already achieved at GCSE grade 9-4/A\*-C)

### PROGRESSION

Completing this course will assist in your progression to become a fully qualified Plumber and help you develop and practise the skills required for employment and career progression. You'll also be able to progress onto our Plumbing Level 2 Diploma or as a plumbing apprentice.

## PLUMBING

LEVEL 2 DIPLOMA | 1 YEAR

### ENTRY REQUIREMENTS

Plumbing Level 1 Diploma and at least 1 GCSE grade 9-4 (A\*-C) in English or Maths.

**Note:** Appropriate uniform/PPE is required in workshops and classrooms.

**Assessment:** Online City & Guilds tests and a portfolio of evidence.

This level 2 qualification builds on the skills learnt at level 1. You will learn about the key methods, materials, processes and principles used in plumbing; allowing you to carry out installations of kitchen and sanitary appliances including: toilets, wash basins, sinks and cisterns.

### STUDIES INCLUDE

- Electrical principles and processes for building services
- Scientific principles for domestic, industrial and commercial plumbing
- Standard plumbing processes
- Cold water and domestic hot water systems
- Central heating systems
- English or Maths (if not both already achieved at GCSE grade 9-4/A\*-C)

### PROGRESSION

On successful completion you'll have a solid understanding and experience in plumbing work and will be able to start a career at entry level specialising in plumbing, or working as an apprentice with an employer in the construction industry. Alternatively you may wish to study a new level 3 T Level qualification.



## MEET MIA

Painting & Decorating – Level 1

### What led you to choose this subject?

My favourite subjects at school were Art and English and I developed an interest in painting through decorating at home with my father. I chose this course as it combined both aspects and allows the freedom of artistic expression.

### Why did you decide to study at ESC?

My brother studied here and I also came on a Year 11 taster day with my school.

The more 'hands-on' elements of a vocational course appealed to me more than academia. However, I appreciate that my GCSE grades will provide me with the grounding to choose a different path in the future if I want to.

# EARLY YEARS & CHILDCARE

Whether you want to work in a nursery or Children’s Centre, become a nanny, or maybe a teaching assistant in a school, having a recognised qualification is essential.

You will benefit from working with experienced tutors, ensuring you get the required support for your success within this sector.

All courses incorporate a work placement which gives you valuable experience of different childcare settings increasing your employability skills for the future.

There are great opportunities for progression into an Apprenticeship, the workplace or onto Higher Education courses at ESC or University.

**“ALTHOUGH I GOT GOOD GSCE GRADES, I COULDN’T SEE A DIRECTION IN STUDYING THREE SEPARATE SUBJECTS AT A LEVEL. THIS COURSE ALLOWS ME TO FOCUS ON A SINGLE SUBJECT WHILST ACHIEVING AN EQUIVALENT QUALIFICATION.”**

LISA  
T LEVEL IN EDUCATION AND CHILDCARE

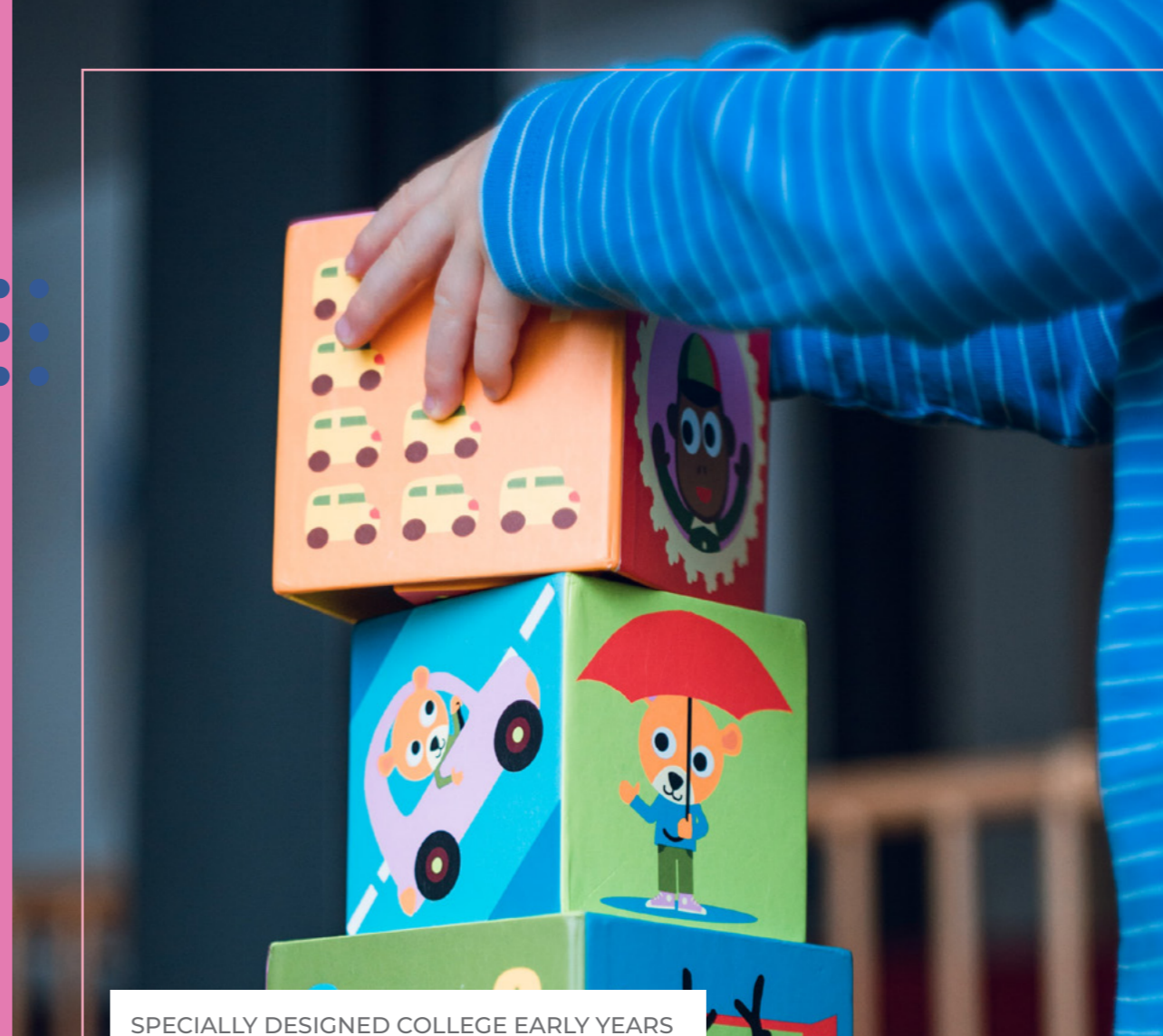
## CAREER PATHS:

- Teacher Assistant
- Preschool Teacher
- Nursery Assistant
- Childcare Center Manager
- Childcare Worker
- Playgroup Facilitator
- Nanny
- Early Intervention Specialist
- Child Life Specialist
- Child Development Consultant
- Early Childhood Education Coordinator
- Family Support Worker
- Childcare Business Owner
- Early Childhood Education Researcher
- Parent Educator

Remember that pursuing additional education, certifications, and specialisation within the field of early years and childcare can open up even more opportunities for career growth and advancement.

### THINKING ABOUT AN APPRENTICESHIP?

Check out the range of subjects we offer from Level 2 to Higher and Degree Level – page 14-15!



SPECIALLY DESIGNED COLLEGE EARLY YEARS AND CHILDCARE UNIFORM

OPPORTUNITIES TO GAIN ON-THE-JOB LEARNING WITH WORK PLACEMENTS IN AN EARLY YEARS SETTING

NATIONALLY-RECOGNISED CHILDCARE CACHE QUALIFICATIONS DEVELOPED BY EXPERTS TO MEET THE NEEDS OF THE SECTOR





## EARLY YEARS PRACTITIONER

LEVEL 2 DIPLOMA (NCFE CACHE)  
1 YEAR

### ENTRY REQUIREMENTS

5 GCSEs grade 9-3 (A\*-D) including English and Maths; or BTEC Level 1 Diploma Merit/Distinction and GCSEs grade 9-3 (A\*-D) in English and Maths; or Level 1 Diploma Pass and GCSEs grade 9-3 (A\*-D) in English and Maths.

A clean DBS check.

**Assessment: Coursework and practical work placements (minimum 250 hours work experience).**

This course introduces you to caring for children and young people between 0-5 years, and you'll gain knowledge of working with children up to 7 years.

You will learn how children develop physically and emotionally, as well as how they learn to interact with people. You will need to be working, volunteering or on practical placement to show competence in both knowledge and skills.

### STUDIES INCLUDE

- Child development and safeguarding
- Supporting children's behaviour
- Positive environments
- Care routines for babies and young children
- English and Maths (if not already achieved at GCSE grade 9-4/A\*-C)

### PROGRESSION

Great progression routes working under supervision in a variety of roles such as a Nursery Practitioner or as an apprentice.

Alternatively you may wish to enrol on our new Early Years Educator Level 3 T Level qualification to build on your current skills and knowledge.

## EDUCATION & CHILDCARE

LEVEL 3 | 2 YEARS

**T LEVEL** See page 16 for more info

168 UCAS Points (Grade D\*D\*D\*)

### ENTRY REQUIREMENTS

5 GCSEs grade 9-4 (A\*-C) including English and Maths; or Level 2 Diploma/Extended Certificate Pass and GCSEs grade 9-4 (A\*-C) in English and Maths.

**Assessment: Practical projects and externally-set coursework and exams.**

You will specialise in early years education and childcare; enabling you to explore the skills, knowledge and behaviours needed to support and promote children's play, early education and foster relationships with children to facilitate their development. This qualification requires a mandatory 750 hours (minimum) industry placement which you must undertake and complete in order to be successfully certified.

### STUDIES INCLUDE

- Child development and behaviour
- Safeguarding and wellbeing
- Equality and diversity
- Special Educational Needs and Disability
- Parents, families and carers
- Working with others

### PROGRESSION

After successfully completing this course you can progress onto higher education courses such as FdA in Early Years at ESC or a top-up degree in courses such as Early Childhood Studies or Early Years Practice. Alternatively you can use the skills and experience you have gained to start an apprenticeship or employment in the childcare industry.



### MEET LISA

Education & Childcare – T Level

**What do you enjoy most about your course?**

I really like the work/study balance of my timetable - three days in College and two days working in a nursery.

**How are you finding the teaching/support?**

Really good, they treat you as adults and get you involved in presenting the lessons, so it's more of a two-way process.

**Have you done any work experience during this course?**

My work at the nursery helps so much with coursework it gives a good insight into work what will be really like.

**What are your future plans?**

I plan to study Primary Teaching at University or become a teaching assistant in a school and learn on the job.

# ENGINEERING

East Surrey College is the ideal place for you to start your journey towards an exciting and diverse career in Engineering, whatever your chosen specialism!

With excellent facilities, our workshops are equipped with the latest technology. We even have an augmented reality welding workshop!

Learn from our industry-experienced staff and develop the technical skills you need to prepare you for a future in the Engineering industry.

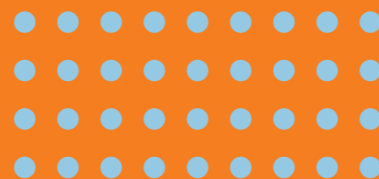
Engineering can offer a range of career paths and jobs following your college course and may require further education at university level where you can specialize in a specific field of engineering.

## CAREER PATHS:

- › Mechanical Engineer
- › Civil Engineer
- › Electrical Engineer
- › Chemical Engineer
- › Aerospace Engineer
- › Environmental Engineer
- › Structural Engineer
- › Industrial Engineer
- › Automotive Engineer
- › Materials Engineer
- › Robotics Engineer
- › Telecommunications Engineer
- › Mining Engineer
- › Marine Engineer
- › Renewable Energy Engineer
- › Quality Engineer
- › Control Systems Engineer

**“TUTORS GIVE GOOD FEEDBACK FOR IMPROVING WORK. THEY’RE FRIENDLY AND YOU CAN ALWAYS ASK FOR HELP WHEN NEEDED.”**

**JOSHUA**  
ELECTRO/MECHANICAL ENGINEERING,  
LEVEL 3



## THINKING ABOUT AN APPRENTICESHIP?

Check out the range of subjects we offer from Level 2 to Higher and Degree Level – page 14-15!



COURSES DELIVERED BY INDUSTRY-EXPERIENCED TUTORS

WELL-EQUIPPED ENGINEERING AND AUGMENTED REALITY WELDING WORKSHOPS

SPECIALLY DESIGNED COLLEGE UNIFORM FOR ENGINEERING STUDENTS





## ENGINEERING

LEVEL 2 | 1 YEAR

### ENTRY REQUIREMENTS

4 GCSEs grade 9-3 (A\*-D) including Science, English and Maths.

**Note:** Appropriate uniform/PPE is required in workshops and classrooms.

**Assessment:** Continuous assessment.

On this Level 2 qualification you will study many aspects of engineering which relate to the design of products and the way the industry works.

You will be introduced to the manufacturing engineering world where you will learn how to use lathes and mills as well as producing Computer Aided Design (CAD) drawings.

### STUDIES INCLUDE

- CAD drawing
- Hand fitting
- Using a lathe
- Using a mill
- Introduction to welding
- English and Maths (if not already achieved at GCSE grade 9-4/A\*-C)

### PROGRESSION

After you have successfully completed this programme, you can choose to stay on at ESC and develop your skills further with our new Level 3 T Level courses, where you will have the chance to work for an employer to develop your skills further.

The course also provides an excellent basis for entry to a wide range of jobs in engineering or further training on an apprenticeship.

## ELECTRO-MECHANICAL ENGINEERING

LEVEL 3 EXTENDED DIPLOMA  
2 YEARS

144 UCAS Points (Grade D)

### ENTRY REQUIREMENTS

5 GCSEs grade 9-4 (A\*-C) including science, English and Maths; or Engineering Level 2 Diploma and GCSEs grade 9-4 (A\*-C) in English and Maths.

**Note:** Appropriate uniform/PPE is required in workshops and classrooms.

**Assessment:** Continuous assessment through assignments.

This course provides you with a good understanding of the engineering sector and helps develop the skills and knowledge required by the industry. You will learn the basic principles of mechanics and the theory and practice of mechanical and electrical/electronic engineering. You will be assessed through assignments and practical work across both electronic and mechanical subjects.

### STUDIES INCLUDE

- Electrical/electronic principles
- Building electronic circuits
- Mechanical principles
- Properties of materials
- Pneumatic and hydraulic systems
- Engineering design

### PROGRESSION

Gain employment in the electronics, power or computer-related areas such as electronics design and development or project planning.

You can also choose to stay on at the College and develop your skills further with our new Level 3 T Level courses. You will also have opportunities to progress onto a Higher National Certificate in General Engineering at ESC and to degree level at university.

## DESIGN & DEVELOPMENT FOR ENGINEERING AND MANUFACTURING

(ELECTRICAL & ELECTRONIC ENGINEERING) LEVEL 3 | 2 YEARS

**T LEVEL** See page 16 for more info

168 UCAS Points (Grade D\*D\*D\*)

### ENTRY REQUIREMENTS

5 GCSEs grade 9-4 (A\*-C) including Science, English and Maths; or Level 2 Diploma/Extended Certificate in Engineering and GCSEs grade 9-4 (A\*-C) in English and Maths.

**Assessment:** Practical projects and externally set coursework and exams.

This course is designed to provide you with the core contexts, concepts and theories required for the engineering industry and is ideal for those interested in a career in the electrical/electronic engineering industries. This qualification requires a mandatory 315 hours (minimum) industry placement which will develop your technical skills and allow you to apply your knowledge in a workplace environment.

### STUDIES INCLUDE

- Engineering and manufacturing design practices
- Engineering representations
- Maintenance, installation and repair
- Principles of electricity/electronics
- Commercial/financial awareness

### PROGRESSION

On successful completion, you can progress onto courses such as Higher National Certificates/Diplomas or top-up degrees at university. Alternatively develop your knowledge on a higher apprenticeship or employment in the engineering sector.



## MEET JOSHUA

Electro/Mechanical Engineering – Level 3

### What led you to choose this course?

I wanted to do something hands-on and I've always helped my Dad with DIY and liked Product Design and Computer Science at school, which both link to this course.

### What do you enjoy most about your course?

It gives a broad knowledge base and is also challenging – which keeps it interesting!

### What are your future plans?

After completing Year 2 of this course, I would like to apply for an apprenticeship, perhaps with Gatwick Thales. My ultimate dream would be to work with my favourite F1 team McLaren, on the manufacturing side.



# HAIR, BEAUTY, MAKE-UP & SPA

Whether you want to work in a hair and beauty salon, or create looks for TV shows and magazine covers, these courses are made just for you!

Gain hands-on experience in our fully equipped salons and make-up studios, preparing for your industry or entrepreneurial endeavours. Our comprehensive range of courses starts from Level 1 to Higher Education. Each course is designed to empower you with the skills and knowledge needed to excel in the dynamic world of hair, beauty or make-up.

## CAREER PATHS:

- Hair Stylist
- Makeup Artist
- Esthetician
- Nail Technician
- Spa Therapist
- Salon Manager
- Beauty Educator/Instructor
- Cosmetic Sales Representative
- Freelance Makeup Artist
- Beauty Blogger/Influencer
- Product Development Specialist
- Wedding Stylist
- Fashion Show Makeup Artist
- Cruise Ship Spa Staff
- Special Effects Makeup Artist
- Beauty Retail Manager

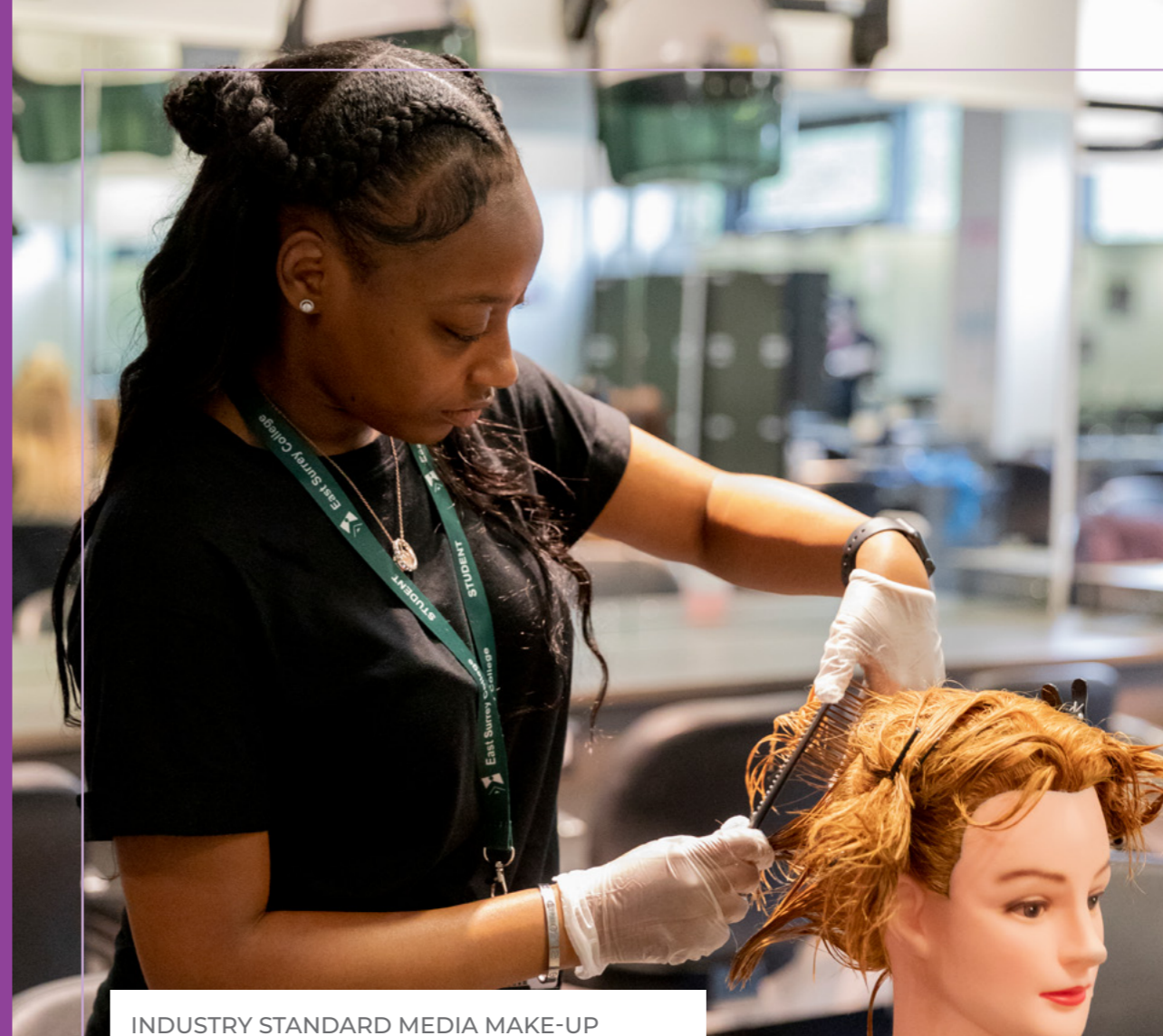


**“ESC IS SO DIFFERENT TO SCHOOL. YOU HAVE MUCH MORE INDEPENDENCE AND ARE WITH LIKE-MINDED PEOPLE WITH THE SAME INTERESTS AS YOU.”**

MADDIE  
HAIRDRESSING  
LEVEL 2

## THINKING ABOUT AN APPRENTICESHIP?

Check out the range of subjects we offer from Level 2 to Higher and Degree Level – page 14-15!



INDUSTRY STANDARD MEDIA MAKE-UP WORKSHOPS AND HAIR AND BEAUTY SALONS

TRAIN IN OUR PROFESSIONAL TRAINING SALON OPEN TO THE PUBLIC, STAFF AND STUDENTS

OPPORTUNITIES TO SHOWCASE YOUR WORK AND COMPETE IN COMPETITIONS, BOTH INTERNALLY AND EXTERNALLY





## HAIR & BEAUTY SKILLS

LEVEL 1 DIPLOMA | 1 YEAR

### ENTRY REQUIREMENTS

4 GCSEs grade 9-2 (A\*-E) including English and Maths.

**Assessment: A portfolio of practical work, exams and assignments.**

This course is an introduction to the beauty industry for those who wish to prepare to train as a Beauty Therapist.

You will learn the basics of health and safety and professional salon behaviour, developing your communication skills and giving you an insight into the services and treatments provided in professional salons.

You will be taught the different techniques needed to provide mini manicures and salon treatments, including facial treatments and pedicures.

### STUDIES INCLUDE

- Introduction to the hair and beauty sector
- Basic manicure treatment
- Basic pedicure treatment
- Health and safety practice in the salon
- Skin care
- Basic make-up application
- English and Maths (if not already achieved at GCSE grade 9-4/A\*-C)

### PROGRESSION

On successful completion you can progress further by studying our Beauty Therapy, Hairdressing or Hair & Media Make-Up Level 2 Diplomas or seek entry level employment opportunities, for example, as a Salon Assistant.

## BEAUTY THERAPY

LEVEL 2 DIPLOMA | 1 YEAR

### ENTRY REQUIREMENTS

5 GCSEs grade 9-3 (A\*-D) including English and Maths.

Or Level 1 Beauty Diploma and GCSEs grade 9-3 (A\*-D) in English and Maths.

**Assessment: A portfolio of practical work, exams and assignments.**

Practising in our commercial salon you will develop the necessary knowledge, understanding and skills to provide facial skincare, eyelash and brow treatments, waxing techniques, manicure and pedicure treatments and applying make-up.

You will also develop the knowledge and skills required focusing on client care, and learn how to comply with health and safety requirements in professional salons.

### STUDIES INCLUDE

- Facial skin care
- Eyelash and eyebrow treatments
- Hair removal using waxing techniques
- Make-Up application
- Health and safety practice in the salon
- Client care and communication in beauty related industries
- Manicure and pedicure treatments
- English and Maths (if not already achieved at GCSE grade 9-4/A\*-C)

### PROGRESSION

Upon successful completion you will have the skills to start work in a salon and/or progress to a Level 3 qualification at the College, building on your knowledge and working your way up to higher level work/study.

## BEAUTY THERAPY

LEVEL 3 DIPLOMA | 1 YEAR

### ENTRY REQUIREMENTS

Beauty Therapy Level 2 Diploma and GCSEs grade 9-4 (A\*-C) in English and Maths.

**Assessment: A portfolio of practical work, exams and assignments.**

This course is ideal for Beauty Therapists aspiring to set up a small business or for those looking to work within the beauty, spa or leisure industry.

You'll learn all aspects of the beauty industry including how to contribute to the financial effectiveness of a business and how to promote additional services to clients.

There will be many opportunities to try out your practical skills on fellow classmates and apply treatments to paying members of the public, all of which help develop your communication and customer service skills.

### STUDIES INCLUDE

- Body massage
- Body and facial electrotherapy treatments
- Massage using pre-blended aromatherapy oils
- Microdermabrasion
- Anatomy and physiology
- Health and safety practice in the salon

### PROGRESSION

Completion of this qualification could lead to a job as a Senior Beauty/Spa Therapist working in a beauty salon or spa. You may also progress onto higher education and enrol onto a foundation degree in a related subject at ESC or with another training provider.



## MEET MADDIE

Hairdressing – Level 2

**What do you enjoy most about your course?**

The practical elements, especially mixing up tint and applying toners to hair, are my favourites. I also really enjoy interacting with clients.

**How are you finding the teaching/support?**

I love my tutor. She's less of a teacher and more of a guide and supporter who advises rather than tells you what to do.

**Have you taken part in events/competitions?**

I took part in a Christmas-themed competition which was really fun. I created a hairstyle on a doll's head using lights, snowflakes and white coloured hairspray.



## HAIRDRESSING LEVEL 2 DIPLOMA | 1 YEAR

### ENTRY REQUIREMENTS

5 GCSEs grade 9-3 (A\*-D) including English and Maths.  
Or: Hairdressing Level 1 Diploma and GCSEs grade 9-3 (A\*-D) in English and Maths.

**Assessment: A portfolio of practical work, exams and assignments.**

Develop your practical techniques in a broad range of women's hairdressing skills to become a Junior Stylist.

During this course you will develop a sound knowledge and understanding of the theory to each unit and gain the employability skills needed to become a successful hairdresser.

### STUDIES INCLUDE

- Client consultation for hair services
- Colour and lighten hair
- Cut women's hair
- The art of dressing hair
- The art of colouring hair
- Health and safety practice in the salon
- English and Maths (if not already achieved at GCSE grade 9-4/A\*-C)

### PROGRESSION

Progression from this course can lead you to study on our Hairdressing Level 3 Diploma or to an advanced apprenticeship at Level 3.

Successful completion will also provide you with the necessary skills and knowledge to continue as a Salon Assistant in the workplace.

## HAIRDRESSING LEVEL 3 DIPLOMA | 1 YEAR

### ENTRY REQUIREMENTS

Hairdressing Level 2 Diploma and GCSEs grade 9-4 (A\*-C) in English and Maths.

**Assessment: A portfolio of practical work, exams and assignments.**

Update and extend your hairdressing skills including advanced colouring techniques and cutting edge fashion work. You will take part in a variety of shows and competitions throughout the year to help develop your career to become a top stylist or hair trainer.

### STUDIES INCLUDE

- Hairdressing techniques
- Colour hair using a variety of techniques
- Provide colour correction services
- Create a variety of permed effects
- Monitor procedures to safely control work operations
- Optional: Provide creative hair extension services (additional cost of approximately £250)

### PROGRESSION

You will have the chance to progress into employment working in a salon or continue to develop your skills on a higher apprenticeship, Higher Education course at ESC or an undergraduate degree at university.



## HAIR & MEDIA MAKE-UP LEVEL 2 DIPLOMA | 1 YEAR

### ENTRY REQUIREMENTS

5 GCSEs grade 9-3 (A\*-D) including English and Maths.

or: Level 1 Hairdressing or Beauty Diploma and GCSEs grade 9-3 (A\*-D) in English and Maths.

**Assessment: A portfolio of practical work, exams and assignments.**

This qualification has been specifically designed to enable you to learn and develop your skills in both aspects of hairdressing and media make-up.

You will be taught the make-up techniques required to perform many professional media, fashion and catwalk looks whilst developing your hairdressing skills to complement your make-up designs.

### STUDIES INCLUDE

- The art of photographic make-up
- The art of dressing hair
- Applying make-up
- Create an image based on a theme within the hair and beauty sector
- Face painting and body art
- Period make-up
- Health and safety practice in the salon
- English and Maths (if not already achieved at GCSE grade 9-4/A\*-C)

### PROGRESSION

Previous students have gone on to gain work placement opportunities and employment on photoshoots and fashion shows; whilst others have gone on to develop their skills on our Fashion & Media Make-Up or Theatrical, Special Effects & Media Make-Up Level 3 Diplomas.

## THEATRICAL, SPECIAL EFFECTS & MEDIA MAKE-UP

### LEVEL 3 DIPLOMA | 1 YEAR

56 UCAS Points (Grade D\*)

### ENTRY REQUIREMENTS

Hair & Media Make-Up Level 2 Diploma, Art Level 3 or Art A Level and GCSEs grade 9-4 (A\*-C) in English and Maths.

**Assessment: A portfolio of practical work, photographic evidence, exams and assignments.**

You will produce avant-garde and commercial looks, including the hair styling and costumes to complement your make-up designs. You will be taught how to develop your skills to create looks that could be used in film, television, fashion and media.

### STUDIES INCLUDE

- Media make-up (special effects)
- Air brush make-up
- Camouflage make-up
- Fashion and photographic make-up
- Apply prosthetic pieces and bald caps
- Style and fit postiche (wigs, facial hair and hairpieces)
- Monitor and maintain health and safety practice in the salon

### PROGRESSION

The next steps after this course are endless! You can progress straight into employment or enrol on a higher or degree apprenticeship.

You can also develop further skills on a higher education course at ESC studying or a degree programme at university.

# HEALTH & SOCIAL CARE

If you want to work with adults in need of support with disabilities or health problems, you can develop the knowledge and experience for a rewarding career in the care sector.

We offer courses ranging from Level 1 to the Level 3 Extended Diploma, catering to your preference of working with adults or young individuals. In collaboration with the East Surrey Care Academy, we forge pathways into the sector, enhancing the recognition of careers in Caring. Our aim is to educate, train, and equip students for progression into the industry, offering direct links to local employers like Surrey and Sussex Healthcare NHS Trust, Surrey Care Association, and First Community Healthcare.



## CAREER PATHS:

- › Care Assistant
- › Support Worker
- › Healthcare Assistant
- › Residential Care Worker
- › Home Care Aide
- › Social Worker
- › Nursing Assistant
- › Mental Health Support Worker
- › Community Outreach Worker
- › Rehabilitation Assistant
- › Care Coordinator
- › Dementia Care Specialist
- › Occupational Therapy
- › Palliative Care Worker
- › Activities Coordinator
- › Health Educator
- › Disability Support Worker
- › Family Support Worker

These roles offer a wide range of opportunities within the health and social care industry, allowing you to make a meaningful difference in people's lives.

## THINKING ABOUT AN APPRENTICESHIP?

Check out the range of subjects we offer from Level 2 to Higher and Degree Level – page 14-15!



COURSES TAUGHT BY SKILLED AND DEDICATED TUTORS WITH INDUSTRY KNOWLEDGE

DEVELOP THE LISTENING, INTERPERSONAL AND COMMUNICATION SKILLS REQUIRED FOR THIS INDUSTRY

WORKING AS PART OF THE EAST SURREY CARE ACADEMY TO HELP EDUCATE, TRAIN AND PREPARE YOUNG PEOPLE FOR A CAREER IN THE HEALTH OR SOCIAL CARE INDUSTRY



## HEALTH, SOCIAL CARE AND CHILDCARE

LEVEL 1 DIPLOMA (NCFE CACHE) 1 YEAR

### ENTRY REQUIREMENTS

4 GCSEs grade 9-2 (A\*-E) including English and Maths.

A clean DBS check.

Assessment: Coursework.

This course offers an introduction into the health and social care environment and covers working with a wide range of client groups and the role played by workers. This ranges from principles and values through to health and safety and working with others.

This course will help you reach your full potential by encouraging and developing the personal skills and qualities needed to work in the health and social care sector.

### STUDIES INCLUDE

- Safeguarding
- Introduction to learning disabilities
- Introduction to dementia
- Job opportunities in health and social care
- Working with others
- Personal and social skills
- English and Maths (if not already achieved at GCSE grade 9-4/A\*-C)

### PROGRESSION

After successfully passing the Level 1 Diploma, you could further develop your skills on our Health & Social Care Level 2 Extended Certificate qualification.

## HEALTH & SOCIAL CARE

LEVEL 2 EXTENDED CERTIFICATE 1 YEAR

### ENTRY REQUIREMENTS

5 GCSEs grade 9-3 (A\*-D) including English and Maths; or Level 1 Diploma Merit/Distinction and GCSEs grade 9-3 (A\*-D) in English and Maths.

A clean DBS check.

Assessment: Coursework, practical work placements and external exams.

This course has been designed for you if you are interested in working within the health or social care environment.

You will have the chance to build up your practical experiences through a work placement, where you are assessed to complete a vocational unit. This could mean working in a hospital or with the elderly, children or those with additional needs.

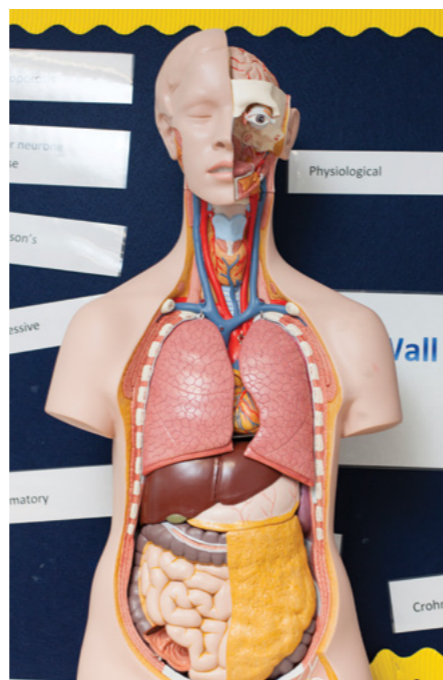
### STUDIES INCLUDE

- Individual rights and needs in health and social care
- Safe environments in health and social care
- Healthy living
- Human lifespan development
- English and Maths (if not already achieved at GCSE grade 9-4/A\*-C)

### PROGRESSION

You will have the necessary skills and knowledge to work in entry level roles in the health and social care industry including Care Assistant, Ward Assistant or Residential Care Assistant.

Many of our students have secured successful employment and apprenticeships in industry, with others progressing onto the Health & Social Care Level 3 Extended Diploma.



## HEALTH & SOCIAL CARE

LEVEL 3 EXTENDED DIPLOMA 2 YEARS

168 UCAS Points (Grade D\*D\*D\*)

### ENTRY REQUIREMENTS

5 GCSEs grade 9-4 (A\*-C) including English and Maths; or Level 2 Extended Certificate/Diploma Merit/Distinction and GCSEs grade 9-4 (A\*-C) in English and Maths.

A clean DBS check.

Assessment: Coursework, externally set exams and practical work placements.

This is a practical, work related course. You will develop the core knowledge and skills that are needed for entry to a range of health occupations.

### STUDIES INCLUDE

- Working within the health and science sector
- Health, safety and environmental regulations
- Managing information and data
- Principles of good scientific and clinical practice
- Core science concepts
- Understanding the healthcare sector
- Providing person-centred care
- Supporting health and wellbeing
- Human anatomy, physiology, diseases and disorders
- Infection prevention and control

### PROGRESSION

Completing this T Level will allow you to progress to university level study in adult and children's nursing, mental health, youth work or public health or other allied health professions.

You may progress into employment or an apprenticeship across a wide range of healthcare career paths.

## HEALTH

LEVEL 3 | 2 YEARS

▶ T LEVEL. See page 16 for more info

168 UCAS Points (Grade D\*D\*D\*)

### ENTRY REQUIREMENTS

5 GCSEs grade 9-4 (A\*-C) including English and Maths; or Level 2 Extended Certificate/Diploma Merit/Distinction and GCSEs grade 9-4 (A\*-C) in English and Maths.

A clean DBS check.

Assessment: Coursework, externally set exams and practical work placements.

This is a practical, work related course. You will develop the core knowledge and skills that are needed for entry to a range of health occupations.

### STUDIES INCLUDE

- Working within the health and science sector
- Health, safety and environmental regulations
- Managing information and data
- Principles of good scientific and clinical practice
- Core science concepts
- Understanding the healthcare sector
- Providing person-centred care
- Supporting health and wellbeing
- Human anatomy, physiology, diseases and disorders
- Infection prevention and control

### PROGRESSION

Completing this T Level will allow you to progress to university level study in adult and children's nursing, mental health, youth work or public health or other allied health professions.

You may progress into employment or an apprenticeship across a wide range of healthcare career paths.



## MEET ERIN

Health & Social Care – Level 3

Have you done any work experience during this course?

I completed a 100-hour work placement in the College's Life Skills SEND Department which was such a great learning experience and really helped me expand my knowledge to go into the Health and Social Care Industry.

During the placement, I formed bonds with the students and got to know each of them individually.

The teachers and additional support staff whom I worked alongside were great. I could ask them questions while observing them in their role, which was very educational.

I have built on my understanding of qualities such as professionalism, commitment and compassion, which has given me the courage to progress into the field of Health and Social Care.

# MOTOR VEHICLE

Are you passionate about cars and interested in how to repair, restore and maintain them? Our motor vehicle courses will help you start your career by giving you the knowledge and practical skills employers are looking for.

Our courses are taught by our expert staff, who have many years of industry experience and knowledge, and you'll get plenty of hands-on experience in our well-equipped workshops. You will also have the chance to broaden your horizons with visits from local employers and trips to track days.

## CAREER PATHS:

- Automotive Technician
- Mechanic
- Auto Electrician
- Diagnostic Technician
- Service Advisor
- Parts Specialist
- Tire Technician
- Automotive Engineer
- Vehicle Inspector
- Fleet Maintenance Manager
- Motorsports Technician
- Race Engineer
- Dyno Technician
- Classic Car Restorer
- Custom Car Builder
- Technical
- Quality Control Inspector



**“I PREFERRED THE VOCATIONAL ROUTE, I NEVER LIKED SITTING IN THE CLASSROOM AND DIDN'T WANT TO SPLIT MYSELF BETWEEN COURSES WITH A LEVELS.”**

DYLAN  
MOTOR VEHICLE  
LEVEL 2

These career paths offer a wide range of opportunities within the automotive and motorsports industries, catering to various interests and skill sets.

**THINKING ABOUT AN APPRENTICESHIP?**

Check out the range of subjects we offer from Level 2 to Higher and Degree Level – page 14-15!




EXCELLENT LINKS WITH INDEPENDENT GARAGES, DEALERS AND SUPPLIERS SUCH AS HALFORDS

MOTOR VEHICLE STUDENTS SERVICE, UPGRADE AND MODIFY CARS AS PART OF THEIR STUDIES

HANDS-ON EXPERIENCE TAUGHT IN MODERN MOTOR VEHICLE WORKSHOPS, USING INDUSTRY STANDARD EQUIPMENT



## INTRODUCTION TO VEHICLE TECHNOLOGY

ENTRY LEVEL DIPLOMA | 1 YEAR

### ENTRY REQUIREMENTS

Few formal qualifications, ideally 4 GCSEs grade 9-1 (A\*-G) or equivalent in English and Maths only.

**Note:** Appropriate uniform/PPE is required in workshops and classrooms.

**Assessment:** Continued practical assessment/portfolio evidence and phase tests.

This Entry Level Diploma will introduce you to a number of motor industry skills and vehicle repair; you will learn vehicle servicing and repair through a mixture of practical and theoretical tasks on vehicles in our well-equipped motor vehicle workshop and classrooms.

### STUDIES INCLUDE

- Engine component principles
- Cooling and lubrication checks
- Steering and suspension principles
- Component fitting
- Brakes/wheels/tyre checks
- Vehicle construction and maintenance
- English and Maths (if not already achieved at GCSE grade 9-4/A\*-C)

### PROGRESSION

After completing this qualification, you may wish to continue progression onto the Vehicle Maintenance & Repair Level 1 Diploma at ESC.

Alternatively, you may wish to secure employment within entry level motor vehicle roles in a garage, or take on an apprenticeship.

## VEHICLE MAINTENANCE & REPAIR

LEVEL 1 DIPLOMA | 1 YEAR

### ENTRY REQUIREMENTS

4 GCSEs grade 9-2 (A\*-E) including English and Maths or: Introduction to Vehicle Technology Entry Level Diploma and GCSEs grade 9-4 (A\*-C) in English and Maths.

**Note:** Appropriate uniform/PPE is required in workshops and classrooms.

**Assessment:** Continued practical assessment/portfolio evidence, phase tests and online multiple choice tests.

This course offers an introduction to motor vehicle maintenance theory and practice. Designed to prepare you for a career in the motor vehicle maintenance and repair industry, you will learn the basics of all the major motor vehicle systems through practical learning tasks and the associated theory.

### STUDIES INCLUDE

- Exhaust systems
- Spark ignition systems
- Steering and suspension systems
- Braking systems
- Wheels and tyres
- Vehicle driveline maintenance
- English and Maths (if not already achieved at GCSE grade 9-4/A\*-C)

### PROGRESSION

You would have gained the skills and knowledge to progress onto the Vehicle Maintenance & Repair Level 2 Certificate at ESC or progress into the workplace in a garage or as an apprentice within the motor trade.

## VEHICLE MAINTENANCE & REPAIR

LEVEL 2 CERTIFICATE | 1 YEAR

### ENTRY REQUIREMENTS

Vehicle Maintenance & Repair or Vehicle Fitting Level 1 Certificate or equivalent and GCSEs grade 9-3 (A\*-D) in English and Maths.

**Note:** Appropriate uniform/PPE is required in workshops and classrooms.

**Assessment:** Continued practical assessment/portfolio evidence, phase tests and online multiple choice tests.

This course enables you to further your career as a Vehicle Fitter. You will extend your learning of vehicle repair through a mixture of practical and theoretical tasks in our high quality, well-equipped motor vehicle workshops and classrooms.

### STUDIES INCLUDE

- Job roles in the automotive industry
- Materials, fabrication and tools
- Light vehicle steering
- Light vehicle wheel alignment
- Light vehicle servicing
- Vehicle batteries and related components
- Light vehicle suspension
- Light vehicle braking systems
- English and Maths (if not already achieved at GCSE grade 9-4/A\*-C)

### PROGRESSION

Successful completion of all elements of this course will allow you to progress on to further study, including the Motorsports Level 3 Extended Diploma.

Your knowledge and skills will be useful in gaining employment within the automotive industry in a number of roles such as sales or service repair.

## MOTORSPORTS VEHICLE MAINTENANCE & REPAIR

LEVEL 2 DIPLOMA | 1 YEAR

### ENTRY REQUIREMENTS

4 GCSE grade 9-3 (A\*-D) that includes English grade 3, Maths grade 4. Applicants must have a satisfactory academic reference and a strong interest in progressing within Motorsport.

**Assessment:** Coursework is assessed by keeping a portfolio of assessed practical work and by completing phase tests and online multiple-choice tests.

You will learn the basics of all the major motor vehicle systems.

### STUDIES INCLUDE

- Event regulations
- Engine mechanical, lubrication and cooling system units and components
- Fuel, ignition, air and exhaust system units and components
- Inspection of a vehicle during competition
- Removal and replacement of chassis units and components
- Removal and replacement electrical units and components
- Removal and replacement transmissions, driveline units and components

### PROGRESSION

A successful student within this course may have the opportunity to study a BTEC Level 3 Extended Diploma Advanced Manufacturing Engineering (Motorsport) or employment as an Apprentice within the Motorsport industry.

## MOTORSPORTS

LEVEL 3 EXTENDED DIPLOMA  
2 YEAR

144 UCAS Points (Grade D)

### ENTRY REQUIREMENTS

5 GCSEs grade 9-4 (A\*-C) including Science, English and Maths.

**Note:** Appropriate uniform/PPE is required in workshops and classrooms.

**Assessment:** Continued practical through assignments, practical assessments and phase tests.

The course aims to provide the technical knowledge and skills required in today's motor industry. You will cover what systems are found in modern vehicles and the associated background studies including engineering, mathematics and science. This qualification involves both theory and practical learning at a challenging level.

### STUDIES INCLUDE

- Operation of vehicle chassis systems
- Motorsport vehicle preparation and inspection
- Motorsport workshop practices
- Vehicle engine principles, operation, service and repair
- Operation and maintenance of light vehicle transmission systems
- Light vehicle suspension, steering and braking systems

### PROGRESSION

On successful completion of this Level 3 qualification, you could progress to a foundation degree in motorsport engineering at university level.

Alternatively, you could find employment in the motorsport industry.



## MEET NATALIA

Motor Vehicle – Entry Level 3

### What led you to choose this course?

I like to customise cars, changing the look and adding power to make them racier. My inspiration comes from Instagram and seeing lots of customised cars on the road in England.

### Why did you decide to study at ESC?

My friend recommended it – she came here to look at the Mechanics courses and thought I'd like it. I found this course online and decided to come.

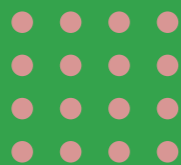
### What do you enjoy most about your course?

I really like the technical and practical elements of car maintenance best, such as changing radiators.

### What are your future plans?

After completing my course, I plan to do an apprenticeship, in customising cars. Eventually, I'd like to open my own customising workshop and perhaps get into Drift Motor Sport.

# PUBLIC SERVICES & SPORT



Our Public Services courses could lead to an exhilarating career in the Armed Forces, Emergency Services or Prison Services, or perhaps you are interested in sports coaching or personal training? These courses will help you reach your goal.

Our courses are designed to prepare you for entry into the Public Services or Sports sectors and will give you the experience and fitness levels you'll require in the future.

You'll be taught by our team of industry experienced tutors who will develop your communication, leadership and team working skills for progression onto Higher Education or future employment.

## CAREER PATHS FOR PUBLIC SERVICES:

- > Police Officer
- > Firefighter
- > Paramedic
- > Prison Officer
- > Armed Forces Personnel
- > Border Force Officer
- > Search and Rescue Worker
- > Emergency Management Specialist
- > Community Support Worker
- > Security Officer

**"THE PRACTICAL SIDE OF THE COURSE IS GREAT - LOTS OF VARIETY AND GETTING OUT THERE ON TRIPS AND EXPEDITIONS"**

**JOSIE**  
PUBLIC SERVICES

## CAREER PATHS FOR SPORT:

- > Sports Coach
- > Physical Education Teacher
- > Personal Trainer
- > Sports Therapist
- > Sports Manager/Administrator
- > Sports Development Officer
- > Sports Marketing Specialist
- > Sports Journalist.
- > Sports Nutritionist
- > Sports Psychologist

These career paths offer a wide range of opportunities within the public services and sports sectors, catering to various interests and aspirations.

## THINKING ABOUT AN APPRENTICESHIP?

Check out the range of subjects we offer from Level 2 to Higher and Degree Level – page 14-15!



IN PERSON AND VIRTUAL TALKS BY EMERGENCY SERVICES AND ARMED FORCES

THERE IS A SPACIOUS AND WELL EQUIPPED GYM AND SPORTS HALL WHERE YOU WILL BE TAUGHT ALL PRACTICAL ELEMENTS

SPECIALLY DESIGNED COLLEGE SPORT AND PUBLIC SERVICES UNIFORM







## **PUBLIC SERVICES**

**LEVEL 1 INTRODUCTORY DIPLOMA | 1 YEAR**

### **ENTRY REQUIREMENTS**

**4 GCSEs grade 9-2 (A\*-E) including English and Maths.**

**Assessment: Coursework and practical assessments.**

This introductory course is an ideal option for those wanting to work in services such as the police service, prison service, fire and rescue services, Royal Air Force, British Army and Royal Navy. It also provides a pathway onto the Level 2 programme.

This course is disciplined and practical and offers a wide range of subjects that will prepare you for a career within the services, giving you an idea of potential career paths. It offers a range of practical experience from expeditions, team building and leadership management to career planning, health and fitness.

### **STUDIES INCLUDE**

- Being organised
- Research topic
- Planning and navigating a route
- Contributing to the community
- Taking part in sport and adventurous activities
- English and Maths (if not already achieved at GCSE grade 9-4/A\*-C)

### **PROGRESSION**

This qualification, once successfully completed, provides a great pathway onto the Public Services Level 2 Extended Certificate, or to Level 2 qualifications in other sectors such as sport.

It can also lead to a range of jobs working in industries including but not limited to sport, outdoor and adventurous, social and youth work and events.

## **PUBLIC SERVICES**

**LEVEL 2 EXTENDED CERTIFICATE 1 YEAR**

### **ENTRY REQUIREMENTS**

**5 GCSEs grade 9-3 (A\*-D) including English and Maths.**

**Assessment: Coursework, written exams and practical assessments.**

This is a practical, work related course, which develops the necessary skills, knowledge and understanding to provide you with a sound, basic public services grounding.

This qualification will give you experience in a wide range of skills including leadership, teamwork and verbal and non-verbal communication. You will also complete work experience or a work based project during non-college days.

### **STUDIES INCLUDE**

- Health and diet
- Leadership and teamwork
- Role and work of the public services
- Volunteering
- Fitness preparation
- Land based activities
- Outdoor expeditions
- English and Maths (if not already achieved at GCSE grade 9-4/A\*-C)

### **PROGRESSION**

On successfully completing this course you will have the opportunity to progress to Public Services Level 3 Extended Diploma at ESC.

You will also be prepared to take on an apprenticeship or other employment if you are looking to pursue a career in the following areas: Police, fire and rescue services, ambulance service, Royal Navy, Royal Air Force or Army.

## **UNIFORMED PROTECTIVE SERVICES**

**LEVEL 3 EXTENDED DIPLOMA 2 YEAR**

**168 UCAS Points (Grade D\*D\*D\*)**

### **ENTRY REQUIREMENTS**

**5 GCSEs grade 9-4 (A\*-C) including English and Maths or: BTEC NQF Level 2 Extended Certificate/ BTEC QCF Level 2 Diploma Merit/ Distinction and GCSEs grade 9-4 (A\*-C) in English and Maths.**

**Assessment: Continued assessment through coursework and external examinations.**

This course is disciplined, practical, and offers a wide range of subject areas that will prepare you for a career within the protective services industry. A variety of trips and visits are organised throughout your learning, including camping trips, indoor climbing, water based sports and expeditions. The course is continually assessed through assignments, practical based projects and external examinations. You will also take part in work experience or a work based project relevant to the subject area during your non-college days.

### **STUDIES INCLUDE**

- Citizenship and diversity
- Behaviour and discipline
- Global affairs and the media
- Health and wellbeing
- Government and protective services
- Command and control

### **PROGRESSION**

Successful completion will allow you to continue your studies on our Public Services HNC course offered at ESC, study at Degree Level or train for an apprenticeship.

Previously, students have gone into a variety of career paths like the police, Royal Navy or Army.



## **MEET MADDISON**

**Public Services – Level 3**

**What led you to choose this course?**

I've wanted to get into dog handling/training since I was very young and used to teach my dog tricks!

**What do you enjoy most about your course?**

The trips and expeditions! We've camped in forests and done lots of water sports, including kayaking, paddle-boarding and canoeing. We also went on a trip to the Royal Air Force Museum in Hendon.

**What are your future plans?**

I found a full-time job as a Dog Handler with the Border Force, so now I plan to learn on the job and work towards being a dog handler – my dream role!



## SPORT

**LEVEL 1 INTRODUCTORY DIPLOMA | 1 YEAR**

### ENTRY REQUIREMENTS

4 GCSEs grade 9-2 (A\*-E) including English and Maths.

**Assessment: Coursework and practical assessments.**

The course is ideal as a first step for people with a keen interest in sport, who wish to progress into a career in the sport and leisure industry.

The topics covered on this course will provide you with a range of introductions to the body, exercise, practical sport and employment within sports industries. There will be an opportunity to complete qualifications in English and Maths, as well as participate in work experience or a work based project during non-college days.

### STUDIES INCLUDE

- Being organised
- Developing a personal plan
- How exercise affects the body
- Playing sport
- Contributing to a sports event
- Keeping active and healthy
- English and Maths (if not already achieved at GCSE grade 9-4/A\*-C)

### PROGRESSION

Achieving and passing the course, as well as a good reference from the tutor, will allow you to move onto a Sport Level 2 Extended Certificate or another Level 2 course at the College. It can also lead to a range of jobs working in industries including but not limited to sport, outdoor and adventurous, social and youth work and events.

## SPORT

**LEVEL 2 FIRST CERTIFICATE 1 YEAR**

### ENTRY REQUIREMENTS

5 GCSEs grade 9-3 (A\*-D) including English and Maths or Level 1 Diploma (Merit/Distinction) including GCSEs grade 9-3 (A\*-D) in English and Maths.

**Assessment: Coursework, computer based examinations and practical assessments.**

This is a practical, work related course which develops skills, knowledge and understanding of the sport industry. Studying this qualification will give you experience in a wide range of skills from teamwork and communication to being able to assess someone's level of fitness. You will also complete work experience or a work based project during non-college days.

### STUDIES INCLUDE

- Fitness for sport and exercise
- Practical performance in sport
- Anatomy and physiology
- Injuries in sport
- Principles of personal training
- The mind and sports performance
- Leading sports activities
- English and Maths (if not already achieved at GCSE grade 9-4/A\*-C)

### PROGRESSION

Successfully passing this course will allow you to move onto the Sport Level 3 Extended Diploma or another Level 3 course within the College depending on entry requirements. It can also lead to a range of industry-related jobs including but not limited to fitness instruction, coaching and event management.

Students in the past have gone onto various entry level job roles in industry or started an apprenticeship.

## SPORT

**LEVEL 3 EXTENDED DIPLOMA 2 YEARS**

168 UCAS Points (Grade D\*D\*D\*)

### ENTRY REQUIREMENTS

5 GCSEs grade 9-4 (A\*-C) including English and Maths or: BTEC NQF Level 2 Extended Certificate/ BTEC QCF Level 2 Diploma Merit/ Distinction and GCSEs grade 9-4 (A\*-C) in English and Maths.

**Assessment: Coursework, written examinations, synoptic assessment and practical assessments.**

If you are interested in sport, this course will develop the necessary skills, knowledge and understanding to provide a successful progression route into the sport industry.

During your time at College you will undergo 14 units and a number of trips to help your learning for the world outside of College. In previous years trips such as taking part in professional sport science testing, water sports, rock climbing and further outdoor activities have provided the skills to progress further. You will also take part in work experience to further develop your skills and understanding within the sporting environment.

### STUDIES INCLUDE

- Anatomy and physiology
- Fitness training and programming
- Professional development
- Sports leadership
- Application of fitness testing
- Practical sports performance

### PROGRESSION

Successful completion of this two-year programme could lead to studying a Sport and Exercise Science Higher National Certificate at ESC, higher education degree course at university or employment in sports development or the fitness industry.



## MEET KEWELL

Sport – Level 3

### What led you to choosing this course?

After leaving school I did Level 1 Sports at ESC then got accepted on to the Chelsea FC Foundation Football Academy Programme in Crawley which included BTEC Sports. When I reached the age limit for the programme of 19, I returned to ESC to continue with Level 3.

### Have you done any work experience during this course?

I worked in gym management at Energie Fitness in Crawley to see what it's like working in a gym environment.

During this, I spoke to people about their gym stories and learned how to coach new participants and how a gym is run, including how to attract and retain customers.

The Manager subsequently offered me a part-time job as a trainer!

# LIFE SKILLS – ESOL

## ENGLISH FOR SPEAKERS OF OTHER LANGUAGES

If English is not your first language, an ESOL course could really help you improve your English Language skills. You can develop reading, writing and speaking skills while broadening your English vocabulary.

Welcome to our ESOL (English for Speakers of Other Languages) course, designed to empower individuals like you with the language skills needed to thrive in an English-speaking environment. Whether you're new to England or looking to enhance your language abilities, our program is here to provide you with the tools and confidence to navigate daily life, pursue further education, and succeed in your career aspirations.

**“IT’S A GOOD COURSE, WE GET A LOT OF ATTENTION AND SUPPORT. WHEN YOU DO SOMETHING GOOD, YOU GET PRAISED AND WHEN YOU DO LESS WELL, YOU GET CONSTRUCTIVE FEEDBACK.”**

PAMELA  
ESOL  
LEVEL 1

### OUR ESOL COURSES WILL SUPPORT THE FOLLOWING AREAS:

- Language Proficiency
- Enhanced Communication
- Access to Opportunities
- Empowerment in Daily Life
- Cultural Engagement
- Future Education
- Study and Work Readiness
- Employment Opportunities
- Confidence and Empowerment

Join us on this journey to not only learn English but also discover new horizons and opportunities that await you in education and employment

### THINKING ABOUT AN APPRENTICESHIP?

Check out the range of subjects we offer from Level 2 to Higher and Degree Level – page 14-15!



YOU CAN INTERACT AND MAKE FRIENDS FROM DIFFERENT COUNTRIES AND CULTURES

TRANSFERABLE SKILLS THAT CAN BE USED IN OTHER COLLEGE FULL-TIME COURSES OR FUTURE EMPLOYMENT

SPECIALISED TEACHING IN ENGLISH AND MATHS FROM SKILLED TUTORS, WITH PROJECTS TAILORED JUST FOR YOU





## ENGLISH FOR SPEAKERS OF OTHER LANGUAGES (ESOL)

ENTRY LEVEL 1, 2 & 3 | 1 YEAR

### ENTRY REQUIREMENTS

This qualification is for 16-18 year olds only.

We will provide all new students with a free English language test to check their entry level.

Assessment: ESOL exams.

On this course you will study the English language and citizenship themes whilst improving your grammar, speaking and listening skills, and writing (formal and informal).

As part of your learning, you will complete an Ascentis Entry Level 3 award in Employment, Digital and Community Engagement Skills for English Language learners; preparing you to continue in education and improve your employability and digital skills.

### STUDIES INCLUDE

- Speaking, listening, reading and writing skills
- Employability and personal development
- Communication
- Functional Skills Maths

### PROGRESSION

You'll have the chance to progress onto the next entry level course offered at ESC.

After completion you can move onto Level 1, focusing on your ESOL skills and opening opportunities into employment or a Full-time vocational course.

## ENGLISH FOR SPEAKERS OF OTHER LANGUAGES (ESOL)

LEVEL 1 | 1 YEAR

### ENTRY REQUIREMENTS

This qualification is for 16-18 year olds only.

We will provide all new students with a free English language test to check their entry level.

Assessment: ESOL exams.

This programme is ideal if English is not your first language and you are living in the UK, wanting to improve your English.

You'll be taught how to improve your grammar, speaking and listening skills, and writing (formal and informal).

As part of your learning, you will complete an Ascentis Entry Level 3 award in Employment, Digital and Community Engagement Skills for English Language learners; developing your confidence to communicate with future employers or continue in education.

### STUDIES INCLUDE

- Speaking, listening, reading and writing skills
- Employability and personal development
- Functional Skills/GCSE Maths
- Team building through our enrichment programmes such as art classes and sporting activities
- Work experience

### PROGRESSION

Successful completion of your course will allow you to continue learning on a full-time vocational course at the College, seek employment or enrol on an apprenticeship.



### MEET HELEN

ESOL – Level 1

What led you to choosing this course?

I moved to the UK in 2021 to be with my husband who's a surgeon at East Surrey hospital. I love the UK and want to improve my English so I can work here. I've already got a degree in accounting.

What do you enjoy most about your course?

I enjoy all of it - reading, writing and speaking. I practice every day by reading newspapers, listening to the radio and reading stories to my son.

How are you finding the teaching/support?

Deborah is a very good teacher, and the support is excellent.

# LIFE SKILLS – SEND

We understand everyone has different needs, so we work closely with parents and students to enable you to select the right programme.

Our courses are designed to help you reach your full potential and enhance your life skills. Our specialist pathways develop the confidence, skills and knowledge you will need to progress into independent living, employment or further study.

You will have opportunities to take part in food preparation, IT, communication and team building activities. You will also develop Maths and English skills and take qualifications in functional skills or GCSEs if appropriate.

The majority of our students will be fully integrated into College life. Students on our SEND courses are invited to take part in a range of College activities including sports, the annual Freshers' Fair and Job Fair.

## SKILLS DEVELOPED:

- > Art & Enterprise
- > Communication Skills
- > Computer Skills
- > Employability Skills
- > Healthy Living Skills
- > Independent Living Skills
- > Numeracy & Literacy
- > Team Work

“THE SUPPORT FOR MY MATHS GCSE HAS BEEN AMAZING! I WAS CONVINCED I WASN'T GOOD AT MATHS BUT SINCE WORKING WITH MY MATHS TUTOR, I'VE REALLY GAINED CONFIDENCE IN MY ABILITIES.”

ANGEL  
GET READY



## THINGS TO NOTE BEFORE YOU START

Financial help may be available. Please contact our Client Services team on 01737 788444 for more information.

## THINKING ABOUT AN APPRENTICESHIP?

Check out the range of subjects we offer from Level 2 to Higher and Degree Level – page 14-15!



OUR SEND TEAM WORK CLOSELY WITH PARENTS AND STUDENTS TO DEVELOP SPECIALIST PROGRAMMES

SPECIALIST TUTORS AND ASSISTANTS ARE ON HAND TO SUPPORT STUDENTS WITH SPECIAL EDUCATIONAL NEEDS AND DISABILITIES

THE HUB IS A FUN AND INCLUSIVE ENVIRONMENT TO HELP DEVELOP SOCIAL SKILLS AND STUDENTS CAN ALSO MAKE USE OF THE LEARNING RESOURCE CENTRE, IT SUITE, GARDEN, ART ROOM, GYM AND SPORTS HALL





## PERSONAL PROGRESS

ENTRY LEVEL 1 | 1-3 YEARS

### ENTRY REQUIREMENTS

**EHCP, interview and assessment.**

**Assessment: Portfolio of evidence. Observations during practical activities.**

This course has been designed to develop your skills in areas such as communications, reading and writing, mathematics, independent living, community access and learning how to engage with the world around you.

The course is offered to those who need to further develop their personal, social and independent skills to prepare them for adulthood and future employment.

### STUDIES INCLUDE

- Communication
- Following instructions
- Developing English skills
- Developing Maths skills
- Developing independent living skills

### PROGRESSION

Once you have successfully completed this course you can progress onto other Life Skills courses offered at ESC such as Skills for Independence and Skills for Work.

## SKILLS FOR INDEPENDENCE

ENTRY LEVEL 1, 2 & 3 | 1-3 YEARS

### ENTRY REQUIREMENTS

**EHCP, interview and assessment.** This course is available across Entry Level 2, Entry Level 3 and Level 1. Individual needs are taken into account to assess the appropriate course level.

**Assessment: Portfolio of evidence. Observations during practical activities.**

This course will prepare you to become more confident and help prepare you for independent living as an adult at home and in the local community.

You will have opportunities to develop your knowledge and skills in areas such as getting out and about, being healthy, looking after your own home and dealing with day-to-day problems.

### STUDIES INCLUDE

- Developing skills for work and independent living
- Practical life skills
- Functional Skills (English, Maths and ICT)
- Cooking and healthy living
- Horticulture
- Community access

### PROGRESSION

You will achieve skills, confidence and qualifications at either Entry Level 2, Entry Level 3 or Level 1 to progress onto the next level. If you have successfully completed the Level 1 qualification and meet entry requirements, you can further your studies on a vocational course at ESC.

## SKILLS FOR WORK

ENTRY LEVEL 1, 2 & 3 | 1-3 YEARS

### ENTRY REQUIREMENTS

**EHCP, interview and assessment.** This course is available across Entry Level 2, Entry Level 3 and Level 1. Individual needs are taken into account to assess the appropriate course level.

**Assessment: Portfolio of evidence. Observations during practical activities.**

This course has been designed to provide you with the opportunity to develop the skills required for future employment.

You will develop a range of personal, social, learning and employment skills that will help you progress to further study or prepare you for the world of work.

### STUDIES INCLUDE

- Employability skills
- English
- Maths
- ICT
- Cooking & healthy living
- Business enterprise
- Volunteering
- Social action

### PROGRESSION

Successful progression into work is encouraged and supported with previous students progressing onto our Supported Internship Level 1 programme.

You will achieve skills, confidence and qualifications at either Entry Level 2, Entry Level 3 or Level 1 to progress onto the next level. If you have successfully completed the Level 1 qualification and meet entry requirements, you can further your studies on a vocational course at ESC.





## SUPPORTED INTERNSHIP

LEVEL 1 | 1 YEAR

### ENTRY REQUIREMENTS

**EHCP, interview and assessment. Working at a minimum of Entry Level 3 in English and Maths.**

**Assessment: Portfolio of evidence. Observations during practical activities and in the workplace.**

The Supported Internship is a one year programme designed to develop the skills required for those with SEND to access employment.

This is a fantastic opportunity for you to see what work is really like and what suits you.

You will attend College one day a week to learn the skills required in the workplace. Our Job Coaches are on hand to help identify your career aspirations and job match where possible based on your interests that can be developed into a career path. The hours and days in work are linked to each individual and the needs of the business.

### STUDIES INCLUDE

- Job search techniques
- Interview skills
- Health and safety in the workplace
- Working with others
- Personal presentation

### PROGRESSION

Successful progression into work is encouraged and supported with previous students progressing into employment or further study on a full-time vocational course at ESC.

## GET READY

LEVEL 1 | 1 YEAR

### ENTRY REQUIREMENTS

**Young people do not need any formal qualifications for this programme, but will be interviewed to assess their suitability and motivation, ensuring that we can meet their needs.**

**Assessment: Coursework.**

This course has been designed for learners who may not be ready for a mainstream vocational course and require a more supported first year to develop the required skills and behaviours required. The course is delivered by staff experienced working with young people and builds in coaching and mentoring and personal development.

Reasons for choosing the course include anxiety, time out of education and not having Maths or English grades.

### STUDIES INCLUDE

- Study skills
- Strategies to self-manage
- Group volunteering and social action projects
- Work placement
- Functional skills and or GCSE Maths and English

### PROGRESSION

Once students have successfully completed this introductory course they will, depending on their tutor reference, be able to progress at the College onto a vocationally focused Level 1 course.



# HOW TO APPLY

**WE'RE DELIGHTED THAT YOU WANT TO JOIN EAST SURREY COLLEGE. CHECK OUT OUR STEP-BY-STEP GUIDE TO THE APPLICATION PROCESS.**

Why not come to one of our Open Events to see the facilities, meet the tutors and ask any questions that you may have (see page 2 for details).

## APPLYING FOR A PLACE

Think about your personal ambitions, your abilities and your preferences. Have a good look through this guide and see what's on offer. Once you have found a subject you would love to study, visit [www.esc.ac.uk](http://www.esc.ac.uk) and search for your course of interest and click the 'Apply' button on the course. You will be taken to our online application form where you will need to register an account.

## ONCE YOU'VE APPLIED

### Information, Advice & Guidance Interview

After applying, you'll be invited to the College for an Information, Advice and Guidance interview where we'll discuss all aspects of your chosen course.

This is an important opportunity to ensure that this is the right course for you and for us to fully explain the details and requirements of the course.

## HOW TO FIND US

**WALKING** The College is a 15-20 min walk from Redhill town centre.

**CYCLING** Covered cycle racks are provided on-site.

**BY TRAIN** Rail services to Brighton, Crawley, East Croydon, Gatwick Airport, Horsham, Reigate, Three Bridges and Tonbridge.

**BY BUS** 357, 405 & 430 stop outside the College.

**DRIVING** Easily accessible from the A217, M25 and M23. Free parking is available during the day on our Gatton South campus via Claremont Road. During the evenings and weekends parking is available at our Gatton North campus, the entrance to which is on London Road, (RH1 2JX).

## THE OFFER

If you're successful you'll be offered a conditional place which will be confirmed during enrolment when you provide your exam results. Adult students with appropriate qualifications are usually offered unconditional places.

## ENROLMENT

You'll be invited to enrol at the College in the summer. If you didn't do as well as you hoped in your exams – don't panic. We will work to offer you a more appropriate course, often leading to your first choice at a later date. If you did better than you expected, we will be able to discuss with you the option of progressing directly on to a higher level.

# COURSE INDEX

## ACCESS TO HIGHER EDUCATION 20

Pre Access to Healthcare Provision	22
Access to Medical Science Level 3	22
Access to Nursing & Health Related Professions Level 3	23
Access To Humanities & Social Science Level 3	23

## APPLIED SCIENCE 24

Applied Science Level 2	26
Applied Science Level 3	27

## AVIATION, TRAVEL & TOURISM 28

Cabin Crew, Travel & Tourism Level 2	30
Aviation Environment Level 2	30
Aviation Level 3	30
Travel & Tourism Level 2	31

## BUSINESS, ACCOUNTING & IT 32

Information Technology Level 1	34
Digital Technology Level 2	34
Computing Level 3	35
Digital Production, Design & Development T Level	35
AAT Accounting Level 2 T Level	36
AAT Accounting Level 3	36
Business Level 1	36
Business Level 2	37
Business Level 3	37
Management & Administration T Level	37

## CREATIVE ARTS 38

Art & Design Level 1	42
Art & Design Level 2	42
Art, Design & Communication Level 3	42
Art & Design Level 4	43
Creative Media Level 1	44
Creative Media Level 2	44
Games, Animation & 3D Modelling Level 3	44
Film & TV Production Level 3	45
Photography Level 3	45
Sound & Music Production Level 2	47
Sound & Music Production Level 3	47

## CONSTRUCTION 48

Brickwork Level 1	50
Brickwork Level 2	50
Carpentry & Joinery Level 1	50
Carpentry (Bench or site) Level 2	51
Construction Multi-Skills Level 1	51
Design, Surveying & Planning for Construction (Surveying & Design for Construction & the Built Environment) T Level	52
Electrical Installation Level 1	53
Electrical Installation Level 2	53
Painting & Decorating Level 1	54
Painting & Decorating Level 2	54
Plumbing Level 1	55
Plumbing Level 2	55

## EARLY YEARS & CHILDCARE 56

Early Years Practitioner Level 2	59
Education & Childcare T Level	59

## ENGINEERING 60

Engineering Level 2	62
Electro-Mechanical Engineering Level 3	63
Design & Development for Engineering & Manufacturing (Electrical & Electronic Engineering) T Level	63

## HAIR, BEAUTY, MAKE-UP & SPA 64

Hair & Beauty Skills Level 1	66
Beauty Therapy Level 2	67
Beauty Therapy Level 3	67
Hairdressing Level 2	68
Hairdressing Level 3	69
Hair & Media Make-Up Level 2	69
Theatrical, Special Effects & Media Make-Up Level 3	69

## HEALTH & SOCIAL CARE 70

Health, Social Care and Childcare Level 1	72
Health & Social Care Level 2	73
Health & Social Care Level 3	72

## MOTOR VEHICLE 74

Introduction to Vehicle Technology Entry Level	76
Vehicle Maintenance & Repair Level 1	76
Vehicle Maintenance & Repair Level 2	76
Motorsports Vehicle Maintenance & Repair Level 2	77
Motorsports Level 3	77

## PUBLIC SERVICES & SPORT 78

Public Services	80
Public Services Level 2	81
Uniformed Protective Services Level 3	81
Sport Level 1	82
Sport Level 2	82
Sport Level 3	83

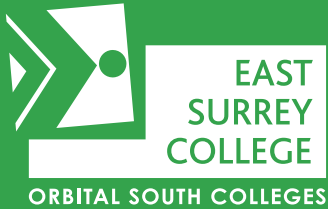
## LIFE SKILLS – ESOL 84

ESOL Entry Level 1, 2 & 3	86
ESOL Level 1	87

## LIFE SKILLS – SEND 88

Personal Progress Entry Level 1	90
Skills for Independence Entry Level 2 & 3	91
Skills for Work Entry Level 2 & 3	91
Supported Internship Level 1	92
Get Ready Level 1	93





East Surrey College  
Gatton Point  
London Road  
Redhill  
Surrey RH1 2JX

Client Services: 01737 788444  
Email: [clientservices@esc.ac.uk](mailto:clientservices@esc.ac.uk)  
Switchboard: 01737 772611  
[www.esc.ac.uk](http://www.esc.ac.uk)

#### FOLLOW US



#### DISCLAIMER

Every effort has been made to ensure that the details included in this guide are up-to-date and accurate at the time of printing. However, the College reserves the right to alter or cancel courses, their content, entry requirements or other details should circumstances dictate.